

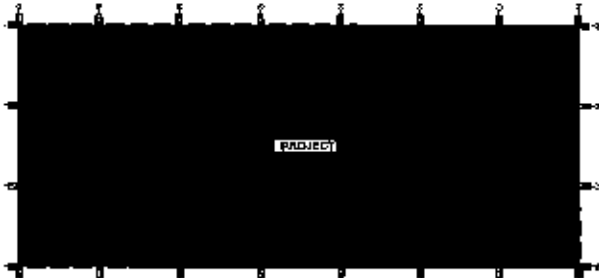
# Attachment 1 of Addendum 2

January 18, 2023



FOR INFORMATION  
PURPOSES ONLY

MUNICIPALITY OF SAN JUAN # 26000 MAP  
(MAPA CALIFICACION DE SUFLOS) - Elevation: 11,475-5007  
Scale: 1:100 Map Number: 30



3rd Floor Glass Elevator Tower AREA: 11,387 SQ.FT.

INDEX	
TITLE	INDEX, DRAWING, LOCATION AND PLOUGH MAPS
<b>Mechanical</b>	
M-100	SCHEMATIC PLAN
M-101	FLOOR PLAN & PARTITION SCHEDULE
M-102	DIFFUSED CEILING PLAN
M-103	PLUMBING PLAN
M-104	PLUMBING DETAILS
M-105	SECTION & DETAILS
M-106	DOCS SCHEDULES & DETAILS
M-107	KITCHEN & BATHROOM DETAILS
M-108	FINISH SCHEDULE, DETAILS & GENERAL NOTES
M-109	DETAILS
<b>Mechanical</b>	
M-110	MECHANICAL AIR CONDITIONING AND VENTILATION LAYOUTS
M-111	PROPOSED AIR CONDITIONING AND VENTILATION LAYOUTS
M-112	LEGEND, CONTROLS AND SCHEDULES
M-113	DUCTWORK SUPPORT DETAILS
M-114	SCHEDULES AND NOTES
<b>Fire Protection</b>	
FP-100	FIRE PROTECTION LAYOUT
<b>Plumbing</b>	
P-100	PLUMBING LAYOUT & LEGEND
P-101	COVERS, LEGEND & GENERAL NOTES
P-102	PIPE SUPPORT DETAILS AND SCHEDULES
P-103	PLUMBING SCHEDULES
P-104	PLUMBING SCHEDULES
<b>Electrical</b>	
E-0	LEGEND & NOTES
E-1	LIGHTING PLAN
E-2	POWER PLAN
E-3	COMMUNICATIONS PLAN
E-4	WALL SCHEDULES
E-5	WIRING & DETAILS
E-6	ONE-LINE DIAGRAM



Location Map  
Scale: 1:20,000  
Projection: NAD 83  
Map Number: 100  
Elevation: 11,475-5007



Site Map (E.M.A.)  
Scale: 1:100  
Map Number: 200020099  
Drawing Title: 04-18-2023

DACO Offices 3rd Floor AEP 1120W North Tower  
Roberto Sanchez Vilella Government Center



P.O. Box 270164 San Juan, P.R. 00928-2844  
T. 787.764.1111 adg@aol.com F. 787.762.8707

De Diego Avenue

Santurce, Puerto Rico





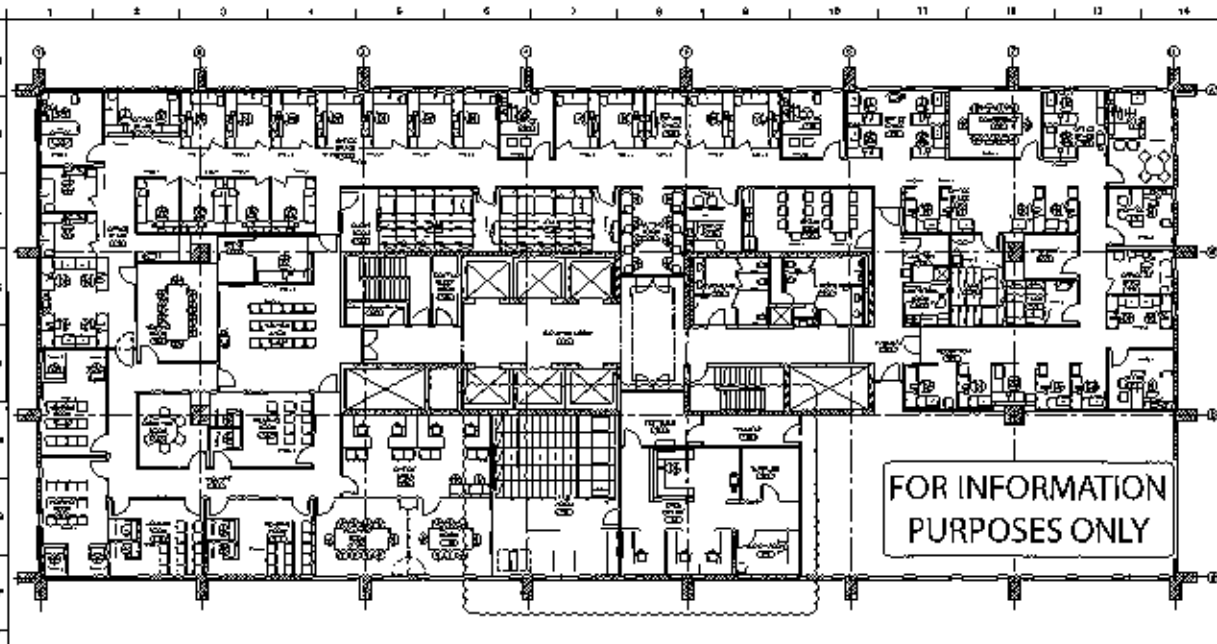


**NOTES:**

- 1. ALL DIMENSIONS ARE TO FACE UNLESS NOTED OTHERWISE.
- 2. ALL WORK SHALL BE IN ACCORDANCE WITH THE LATEST EDITIONS OF THE BIDDING DOCUMENTS AND THE SPECIFICATIONS.
- 3. ALL MATERIALS SHALL BE NEW UNLESS NOTED OTHERWISE.
- 4. ALL MATERIALS SHALL BE OF THE HIGHEST QUALITY AVAILABLE.
- 5. ALL MATERIALS SHALL BE MATCHED FOR COLOR AND GRAIN.
- 6. ALL MATERIALS SHALL BE MATCHED FOR FINISH AND COLOR.
- 7. ALL MATERIALS SHALL BE MATCHED FOR GRAIN AND COLOR.
- 8. ALL MATERIALS SHALL BE MATCHED FOR GRAIN AND COLOR.
- 9. ALL MATERIALS SHALL BE MATCHED FOR GRAIN AND COLOR.
- 10. ALL MATERIALS SHALL BE MATCHED FOR GRAIN AND COLOR.
- 11. ALL MATERIALS SHALL BE MATCHED FOR GRAIN AND COLOR.
- 12. ALL MATERIALS SHALL BE MATCHED FOR GRAIN AND COLOR.
- 13. ALL MATERIALS SHALL BE MATCHED FOR GRAIN AND COLOR.
- 14. ALL MATERIALS SHALL BE MATCHED FOR GRAIN AND COLOR.
- 15. ALL MATERIALS SHALL BE MATCHED FOR GRAIN AND COLOR.
- 16. ALL MATERIALS SHALL BE MATCHED FOR GRAIN AND COLOR.

**LEGEND:**

- 1. [Symbol] - [Description]
- 2. [Symbol] - [Description]
- 3. [Symbol] - [Description]
- 4. [Symbol] - [Description]
- 5. [Symbol] - [Description]
- 6. [Symbol] - [Description]
- 7. [Symbol] - [Description]
- 8. [Symbol] - [Description]
- 9. [Symbol] - [Description]
- 10. [Symbol] - [Description]
- 11. [Symbol] - [Description]
- 12. [Symbol] - [Description]
- 13. [Symbol] - [Description]
- 14. [Symbol] - [Description]
- 15. [Symbol] - [Description]
- 16. [Symbol] - [Description]



FURNITURE FLOOR PLAN | LEVEL 03 | 6-14

NOTES 6-16

**FURNITURE SCHEDULE (SEE FLOOR PLAN)**

NO.	DESCRIPTION	QTY	UNIT	REMARKS
1	...	...	...	...
2	...	...	...	...
3	...	...	...	...
4	...	...	...	...
5	...	...	...	...
6	...	...	...	...
7	...	...	...	...
8	...	...	...	...
9	...	...	...	...
10	...	...	...	...
11	...	...	...	...
12	...	...	...	...
13	...	...	...	...
14	...	...	...	...
15	...	...	...	...
16	...	...	...	...
17	...	...	...	...
18	...	...	...	...
19	...	...	...	...
20	...	...	...	...
21	...	...	...	...
22	...	...	...	...
23	...	...	...	...
24	...	...	...	...
25	...	...	...	...
26	...	...	...	...
27	...	...	...	...
28	...	...	...	...
29	...	...	...	...
30	...	...	...	...
31	...	...	...	...
32	...	...	...	...
33	...	...	...	...
34	...	...	...	...
35	...	...	...	...
36	...	...	...	...
37	...	...	...	...
38	...	...	...	...
39	...	...	...	...
40	...	...	...	...
41	...	...	...	...
42	...	...	...	...
43	...	...	...	...
44	...	...	...	...
45	...	...	...	...
46	...	...	...	...
47	...	...	...	...
48	...	...	...	...
49	...	...	...	...
50	...	...	...	...
51	...	...	...	...
52	...	...	...	...
53	...	...	...	...
54	...	...	...	...
55	...	...	...	...
56	...	...	...	...
57	...	...	...	...
58	...	...	...	...
59	...	...	...	...
60	...	...	...	...
61	...	...	...	...
62	...	...	...	...
63	...	...	...	...
64	...	...	...	...
65	...	...	...	...
66	...	...	...	...
67	...	...	...	...
68	...	...	...	...
69	...	...	...	...
70	...	...	...	...
71	...	...	...	...
72	...	...	...	...
73	...	...	...	...
74	...	...	...	...
75	...	...	...	...
76	...	...	...	...
77	...	...	...	...
78	...	...	...	...
79	...	...	...	...
80	...	...	...	...
81	...	...	...	...
82	...	...	...	...
83	...	...	...	...
84	...	...	...	...
85	...	...	...	...
86	...	...	...	...
87	...	...	...	...
88	...	...	...	...
89	...	...	...	...
90	...	...	...	...
91	...	...	...	...
92	...	...	...	...
93	...	...	...	...
94	...	...	...	...
95	...	...	...	...
96	...	...	...	...
97	...	...	...	...
98	...	...	...	...
99	...	...	...	...
100	...	...	...	...

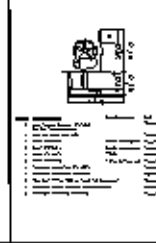
**FURNITURE SPECIFICATIONS**

NO.	DESCRIPTION	QTY	UNIT	REMARKS
1	...	...	...	...
2	...	...	...	...
3	...	...	...	...
4	...	...	...	...
5	...	...	...	...
6	...	...	...	...
7	...	...	...	...
8	...	...	...	...
9	...	...	...	...
10	...	...	...	...
11	...	...	...	...
12	...	...	...	...
13	...	...	...	...
14	...	...	...	...
15	...	...	...	...
16	...	...	...	...
17	...	...	...	...
18	...	...	...	...
19	...	...	...	...
20	...	...	...	...
21	...	...	...	...
22	...	...	...	...
23	...	...	...	...
24	...	...	...	...
25	...	...	...	...
26	...	...	...	...
27	...	...	...	...
28	...	...	...	...
29	...	...	...	...
30	...	...	...	...
31	...	...	...	...
32	...	...	...	...
33	...	...	...	...
34	...	...	...	...
35	...	...	...	...
36	...	...	...	...
37	...	...	...	...
38	...	...	...	...
39	...	...	...	...
40	...	...	...	...
41	...	...	...	...
42	...	...	...	...
43	...	...	...	...
44	...	...	...	...
45	...	...	...	...
46	...	...	...	...
47	...	...	...	...
48	...	...	...	...
49	...	...	...	...
50	...	...	...	...
51	...	...	...	...
52	...	...	...	...
53	...	...	...	...
54	...	...	...	...
55	...	...	...	...
56	...	...	...	...
57	...	...	...	...
58	...	...	...	...
59	...	...	...	...
60	...	...	...	...
61	...	...	...	...
62	...	...	...	...
63	...	...	...	...
64	...	...	...	...
65	...	...	...	...
66	...	...	...	...
67	...	...	...	...
68	...	...	...	...
69	...	...	...	...
70	...	...	...	...
71	...	...	...	...
72	...	...	...	...
73	...	...	...	...
74	...	...	...	...
75	...	...	...	...
76	...	...	...	...
77	...	...	...	...
78	...	...	...	...
79	...	...	...	...
80	...	...	...	...
81	...	...	...	...
82	...	...	...	...
83	...	...	...	...
84	...	...	...	...
85	...	...	...	...
86	...	...	...	...
87	...	...	...	...
88	...	...	...	...
89	...	...	...	...
90	...	...	...	...
91	...	...	...	...
92	...	...	...	...
93	...	...	...	...
94	...	...	...	...
95	...	...	...	...
96	...	...	...	...
97	...	...	...	...
98	...	...	...	...
99	...	...	...	...
100	...	...	...	...

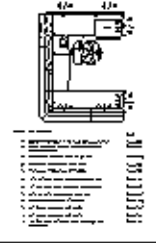
**SCHEDULE INFORMATION**

NO.	DESCRIPTION	QTY	UNIT	REMARKS
1	...	...	...	...
2	...	...	...	...
3	...	...	...	...
4	...	...	...	...
5	...	...	...	...
6	...	...	...	...
7	...	...	...	...
8	...	...	...	...
9	...	...	...	...
10	...	...	...	...
11	...	...	...	...
12	...	...	...	...
13	...	...	...	...
14	...	...	...	...
15	...	...	...	...
16	...	...	...	...
17	...	...	...	...
18	...	...	...	...
19	...	...	...	...
20	...	...	...	...
21	...	...	...	...
22	...	...	...	...
23	...	...	...	...
24	...	...	...	...
25	...	...	...	...
26	...	...	...	...
27	...	...	...	...
28	...	...	...	...
29	...	...	...	...
30	...	...	...	...
31	...	...	...	...
32	...	...	...	...
33	...	...	...	...
34	...	...	...	...
35	...	...	...	...
36	...	...	...	...
37	...	...	...	...
38	...	...	...	...
39	...	...	...	...
40	...	...	...	...
41	...	...	...	...
42	...	...	...	...
43	...	...	...	...
44	...	...	...	...
45	...	...	...	...
46	...	...	...	...
47	...	...	...	...
48	...	...	...	...
49	...	...	...	...
50	...	...	...	...
51	...	...	...	...
52	...	...	...	...
53	...	...	...	...
54	...	...	...	...
55	...	...	...	...
56	...	...	...	...
57	...	...	...	...
58	...	...	...	...
59	...	...	...	...
60	...	...	...	...
61	...	...	...	...
62	...	...	...	...
63	...	...	...	...
64	...	...	...	...
65	...	...	...	...
66	...	...	...	...
67	...	...	...	...
68	...	...	...	...
69	...	...	...	...
70	...	...	...	...
71	...	...	...	...
72	...	...	...	...
73	...	...	...	...
74	...	...	...	...
75	...	...	...	...
76	...	...	...	...
77	...	...	...	...
78	...	...	...	...
79	...	...	...	...
80	...	...	...	...
81	...	...	...	...
82	...	...	...	...
83	...	...	...	...
84	...	...	...	...
85	...	...	...	...
86	...	...	...	...
87	...	...	...	...
88	...	...	...	...
89	...	...	...	...
90	...	...	...	...
91	...	...	...	...
92	...	...	...	...
93	...	...	...	...
94	...	...	...	...
95	...	...	...	...
96	...	...	...	...
97	...	...	...	...
98	...	...	...	...
99	...	...	...	...
100	...	...	...	...

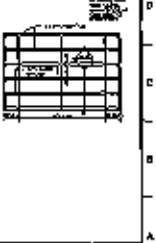
**TYPICAL A**



**TYPICAL B**



**TYPICAL C**



**FINISH PLAN**

NO.	DESCRIPTION	QTY	UNIT	REMARKS
1	...	...	...	...
2	...	...	...	...
3	...	...	...	...
4	...	...	...	...
5	...	...	...	...
6	...	...	...	...
7	...	...	...	...
8	...	...	...	...
9	...	...	...	...
10	...	...	...	...
11	...	...	...	...
12	...	...	...	...
13	...	...	...	...
14	...	...	...	...
15	...	...	...	...
16	...	...	...	...
17	...	...	...	...
18	...	...	...	...
19	...	...	...	...
20	...	...	...	...
21	...	...	...	...
22	...	...	...	...
23	...	...	...	...
24	...	...	...	...
25	...	...	...	...
26	...	...	...	...
27	...	...	...	...
28	...	...	...	...
29	...	...	...	...
30	...	...	...	...
31	...	...	...	...
32	...	...	...	...
33	...	...	...	...
34	...	...	...	...
35	...	...	...	...
3				

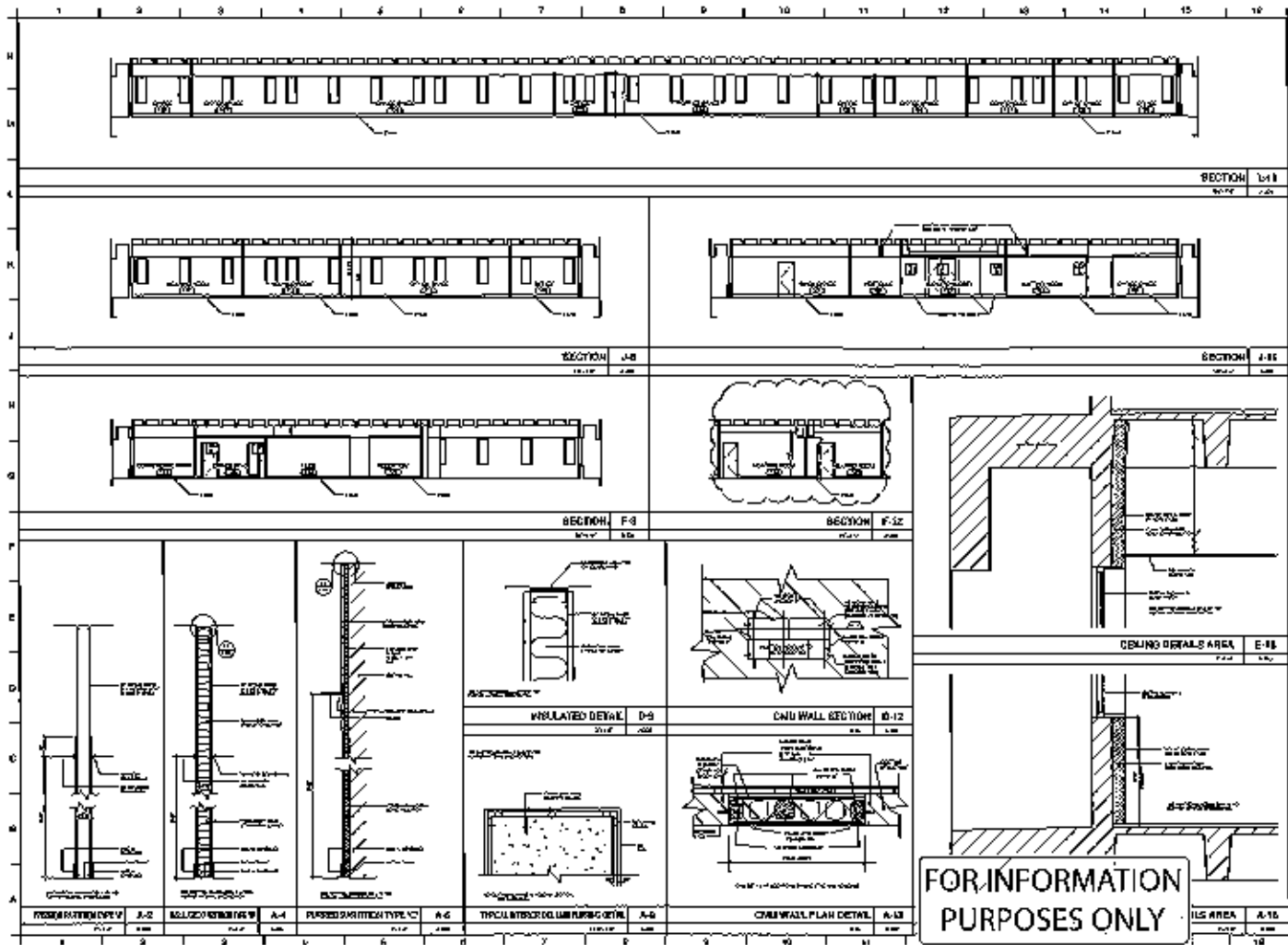
NOTES:																																									
TYPICAL A		TYPICAL B		TYPICAL C		TYPICAL D		TYPICAL E		TYPICAL F		TYPICAL G																													
TYPICAL H		TYPICAL I		TYPICAL J		TYPICAL K		TYPICAL L		TYPICAL M		TYPICAL N																													
TYPICAL P		TYPICAL R		TYPICAL T		TYPICAL U		TYPICAL V		TYPICAL W		TYPICAL X		TYPICAL Y																											
TYPICAL Q		TYPICAL S		TYPICAL T						TYPICAL Z		TYPICAL 2																													
FURNITURE TYPICALS												A/H																													
1												2		3		4		5		6		7		8		9		10		11		12		13		14		15		16	
A												B		C		D		E		F		G		H		I		J		K		L		M		N					

**FOR INFORMATION  
PURPOSES ONLY**

1	2	3	4	5	6	7	8	9	10	11	12	13	14	15	16
1	2	3	4	5	6	7	8	9	10	11	12	13	14	15	16

**BAGG OFFICES  
3RD FLOOR JEP 1130W**  
 1. 2. 3. 4. 5. 6. 7. 8. 9. 10. 11. 12. 13. 14. 15. 16.  
 A. B. C. D. E. F. G. H. I. J. K. L. M. N. O. P. Q. R. S. T. U. V. W. X. Y. Z.

|                |    |
|----------------|----|
| FURNITURE TYP. |    |
| 1              | 2  |
| 3              | 4  |
| 5              | 6  |
| 7              | 8  |
| 9              | 10 |
| 11             | 12 |
| 13             | 14 |
| 15             | 16 |



**LEGEND:**

- Concrete
- ▨ Insulation
- ▤ Masonry
- ▧ Metal
- ▩ Wood

|   |   |   |   |   |   |   |   |   |    |    |    |    |    |    |    |
|---|---|---|---|---|---|---|---|---|----|----|----|----|----|----|----|
| 1 | 2 | 3 | 4 | 5 | 6 | 7 | 8 | 9 | 10 | 11 | 12 | 13 | 14 | 15 | 16 |
|---|---|---|---|---|---|---|---|---|----|----|----|----|----|----|----|

**BASE COURTESY SURFLOOR 12AW**

BASE COURTESY SURFLOOR 12AW  
 BASE COURTESY SURFLOOR 12AW  
 BASE COURTESY SURFLOOR 12AW

**FOR INFORMATION PURPOSES ONLY**

**SECTION DETAILS**

|   |   |   |   |   |   |   |   |   |    |    |    |    |    |    |    |
|---|---|---|---|---|---|---|---|---|----|----|----|----|----|----|----|
| 1 | 2 | 3 | 4 | 5 | 6 | 7 | 8 | 9 | 10 | 11 | 12 | 13 | 14 | 15 | 16 |
|---|---|---|---|---|---|---|---|---|----|----|----|----|----|----|----|

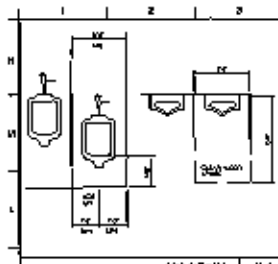
**A-200**



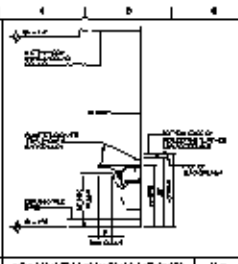




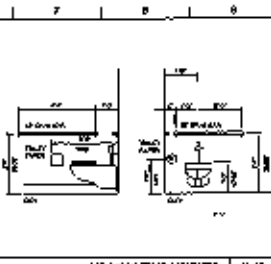




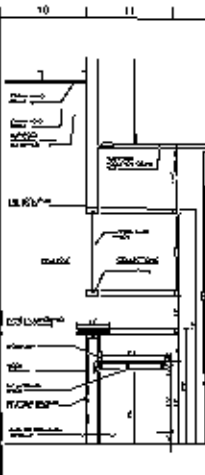
ADA URINAL H-4



ADA VANITY MOUNTING HEIGHTS H-8



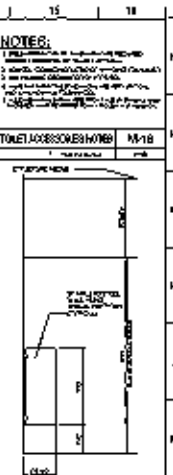
HG MOUNTING HEIGHTS H-4B



SECTION H-4



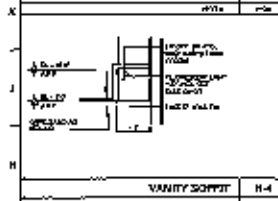
CEILING AND TOILET PARTITION G-14



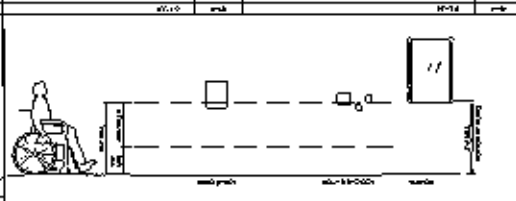
WALL MOUNTING PARTITION G-15

**NOTES:**  
 1. ALL DIMENSIONS UNLESS OTHERWISE SPECIFIED ARE IN INCHES.  
 2. SEE GENERAL NOTES FOR FINISHES AND MATERIALS.  
 3. SEE GENERAL NOTES FOR TYPICAL DETAILS.  
 4. SEE GENERAL NOTES FOR TYPICAL DETAILS.  
 5. SEE GENERAL NOTES FOR TYPICAL DETAILS.

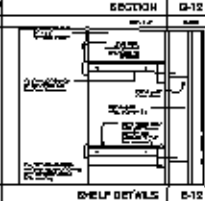
|       |            |      |
|-------|------------|------|
| TILE  | 300x300    | M-18 |
| GROUT | 1/8" THICK |      |



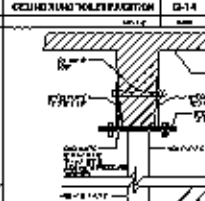
VANITY SOPFIT H-4



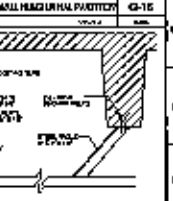
HG FORWARD REACH MOUNTING HEIGHTS G-10



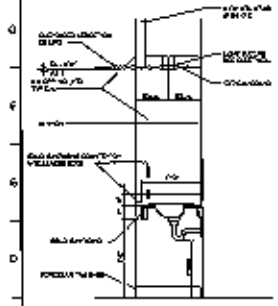
SECTION G-12



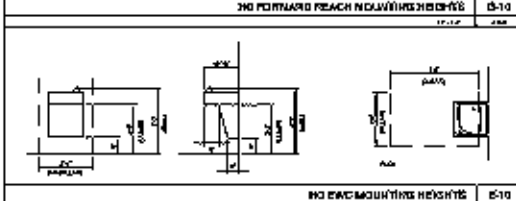
CEILING AND TOILET PARTITION G-14



WALL MOUNTING PARTITION G-15



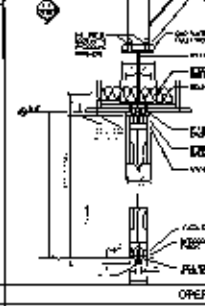
VANITY SECTION G-4



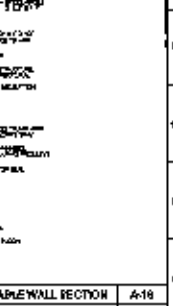
HG FORWARD REACH MOUNTING HEIGHTS G-10



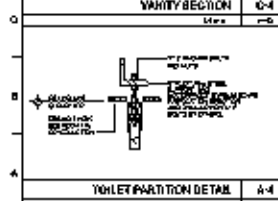
SHELF DETAILS G-12



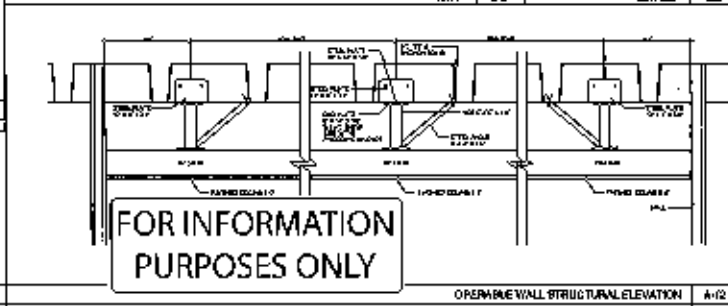
OPERABLE WALL SECTION G-16



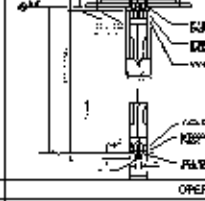
OPERABLE WALL SECTION G-16



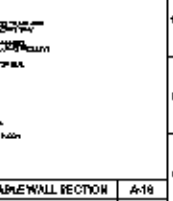
TOILET PARTITION DETAIL A-4



OPERABLE WALL STRUCTURAL ELEVATION A-12



OPERABLE WALL SECTION G-16



OPERABLE WALL SECTION G-16

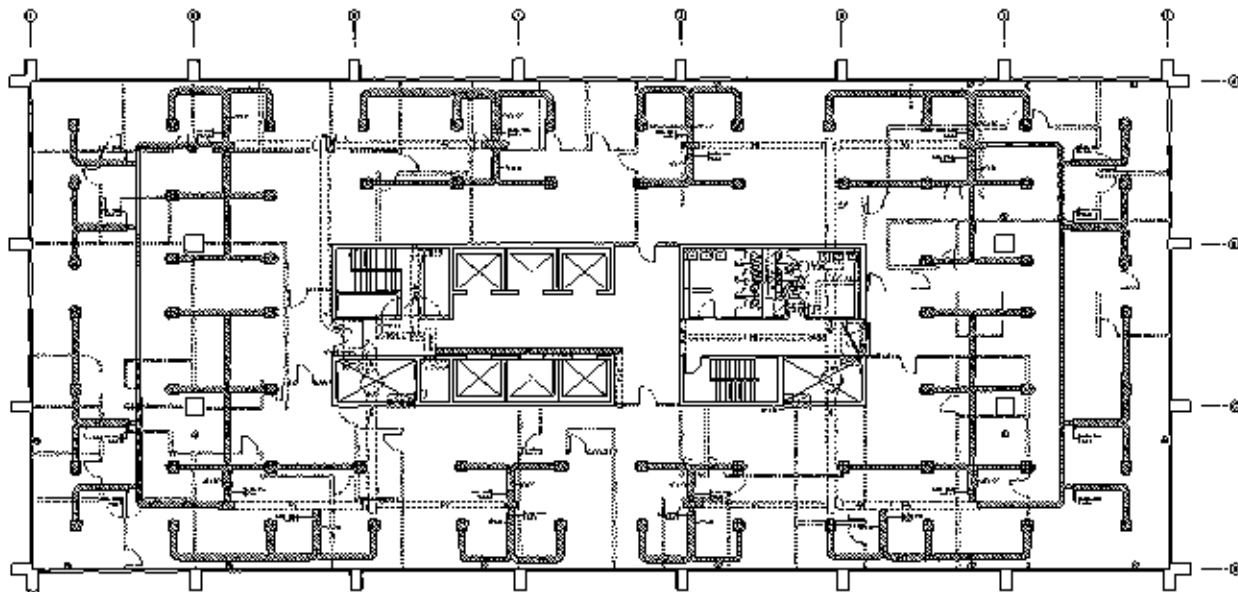
FOR INFORMATION  
PURPOSES ONLY

|       |            |      |
|-------|------------|------|
| TILE  | 300x300    | M-18 |
| GROUT | 1/8" THICK |      |

6.00 OFFICE  
 3.00 CORNER  
 1.00 WALL  
 1.00 FLOOR  
 1.00 PARTITION  
 1.00 PLUMBING

**NOTES**  
 1. ALL DIMENSIONS UNLESS OTHERWISE SPECIFIED ARE IN INCHES.  
 2. SEE GENERAL NOTES FOR FINISHES AND MATERIALS.  
 3. SEE GENERAL NOTES FOR TYPICAL DETAILS.  
 4. SEE GENERAL NOTES FOR TYPICAL DETAILS.  
 5. SEE GENERAL NOTES FOR TYPICAL DETAILS.

FOR INFORMATION  
PURPOSES ONLY



- LEGEND:
- REG. (S) (100)
  - REG. (R) (100)
  - REG. (D) (100)
  - REG. (A) (100)
  - REG. (B) (100)
  - REG. (C) (100)
  - REG. (E) (100)
  - REG. (F) (100)
  - REG. (G) (100)
  - REG. (H) (100)
  - REG. (I) (100)
  - REG. (J) (100)
  - REG. (K) (100)
  - REG. (L) (100)
  - REG. (M) (100)
  - REG. (N) (100)
  - REG. (O) (100)
  - REG. (P) (100)
  - REG. (Q) (100)
  - REG. (R) (100)
  - REG. (S) (100)
  - REG. (T) (100)
  - REG. (U) (100)
  - REG. (V) (100)
  - REG. (W) (100)
  - REG. (X) (100)
  - REG. (Y) (100)
  - REG. (Z) (100)

|     |      |    |
|-----|------|----|
| NO. | DATE | BY |
|     |      |    |
|     |      |    |
|     |      |    |
|     |      |    |
|     |      |    |

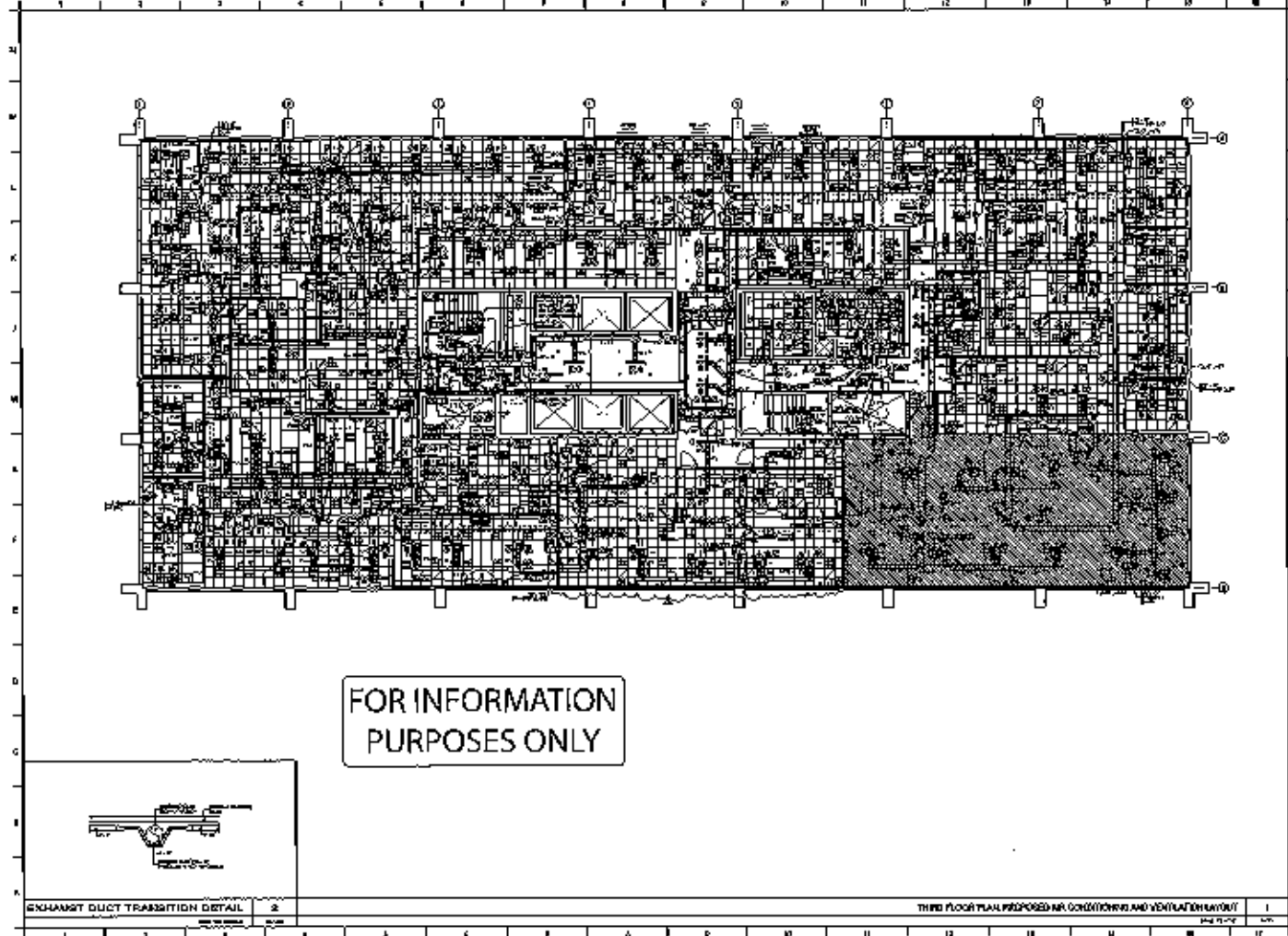
DATE: 07/20/2011  
 3RD FLOOR PLAN  
 AIR COND. AND VENT. LAYOUT  
 11/11/11  
 11/11/11



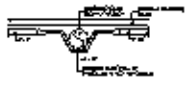
Third Floor Plan, Cond. & Vent. Layout  
 11/11/11  
 11/11/11  
 11/11/11

THIRD FLOOR PLAN, COND. AND VENT. LAYOUT  
 11/11/11

M-100



FOR INFORMATION  
PURPOSES ONLY



EXHAUST DUCT TRANSITION DETAIL 2

THIRD FLOOR PLAN PROPOSED AIR CONDITIONING AND VENTILATION LAYOUT 1

**NOTES:**  
 1. ALL WORK SHALL BE IN ACCORDANCE WITH THE LATEST EDITIONS OF THE MECHANICAL CODES AND STANDARDS.  
 2. ALL WORK SHALL BE IN ACCORDANCE WITH THE LATEST EDITIONS OF THE MECHANICAL CODES AND STANDARDS.  
 3. ALL WORK SHALL BE IN ACCORDANCE WITH THE LATEST EDITIONS OF THE MECHANICAL CODES AND STANDARDS.  
 4. ALL WORK SHALL BE IN ACCORDANCE WITH THE LATEST EDITIONS OF THE MECHANICAL CODES AND STANDARDS.

LEVELS:

|   |   |   |   |   |   |   |   |   |    |    |    |    |    |    |    |    |
|---|---|---|---|---|---|---|---|---|----|----|----|----|----|----|----|----|
| 1 | 2 | 3 | 4 | 5 | 6 | 7 | 8 | 9 | 10 | 11 | 12 | 13 | 14 | 15 | 16 | 17 |
|   |   |   |   |   |   |   |   |   |    |    |    |    |    |    |    |    |

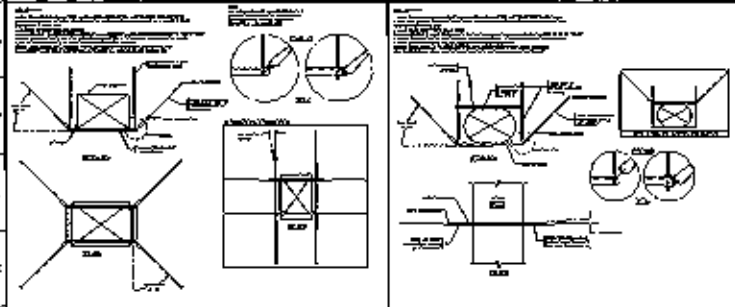
**OWNER:**  
**2nd FLOOR MECH. ROOM**  
 2000 20th Street  
 Los Angeles, CA 90011  
 (213) 475-1234



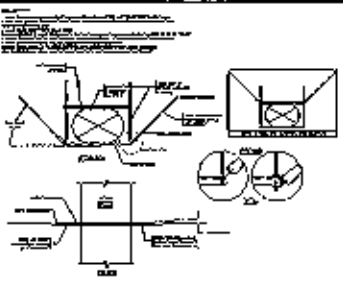
**PROJECT:**  
 Third Floor Plan, Prop.  
 Air Cond. and Vent. Layout  
 Date: 12/31/2024  
 Scale: 1/8" = 1'-0"

**M-101**

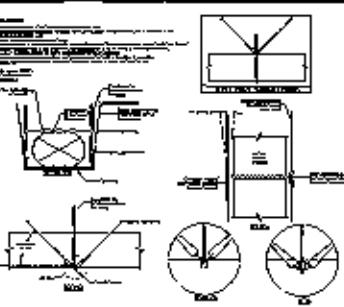




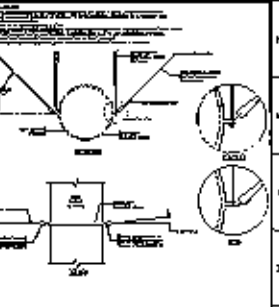
RECTANGULAR UNITS OF EQUIPMENT / 4-WAY



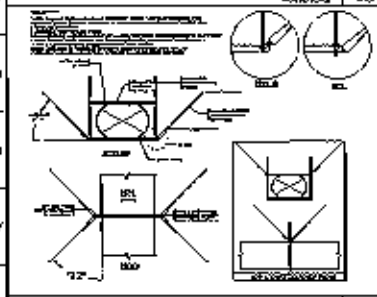
FLAT OR OVAL DUCTWORK / TRANSVERSE



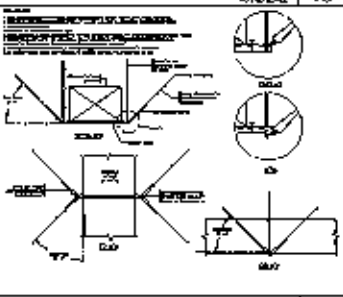
FLAT OR OVAL DUCTWORK / LONGITUDINAL



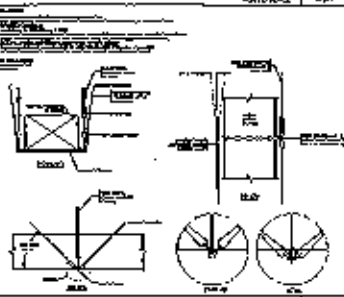
ROUND DUCTWORK / TRANSVERSE



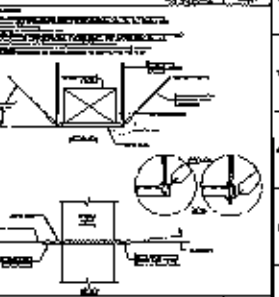
FLAT OR OVAL DUCTWORK / 4-WAY



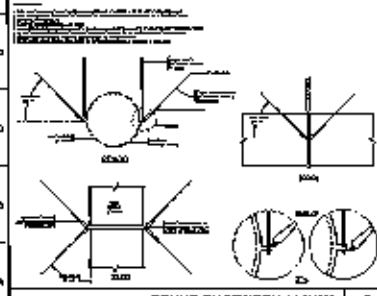
RECTANGULAR DUCTWORK / 4-WAY



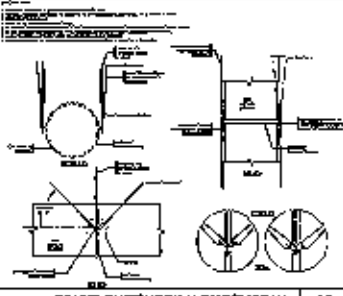
RECTANGULAR DUCTWORK / LONGITUDINAL



RECT. DUCTWORK / TRANSVERSE



ROUND DUCTWORK / 4-WAY



ROUND DUCTWORK / LONGITUDINAL

FOR INFORMATION PURPOSES ONLY

LEGEND:

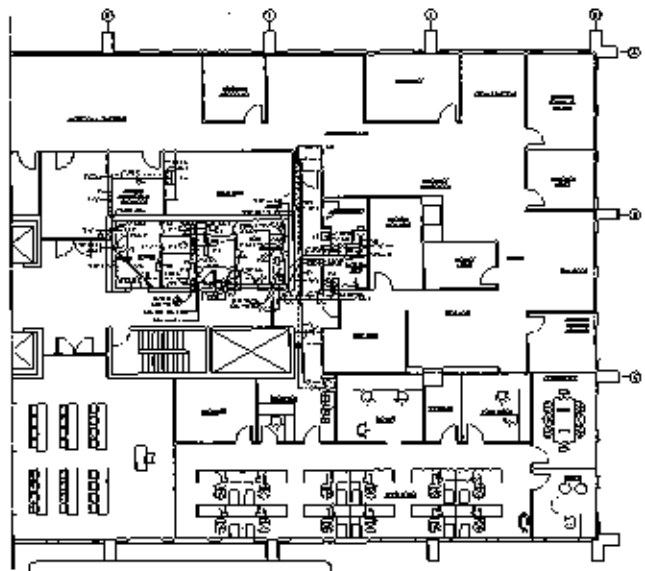


INDUSTRIAL SUPPLY COMPANY  
 10000 W. 10th Ave.  
 Denver, Colorado 80202  
 (303) 751-1000  
 A B C D  

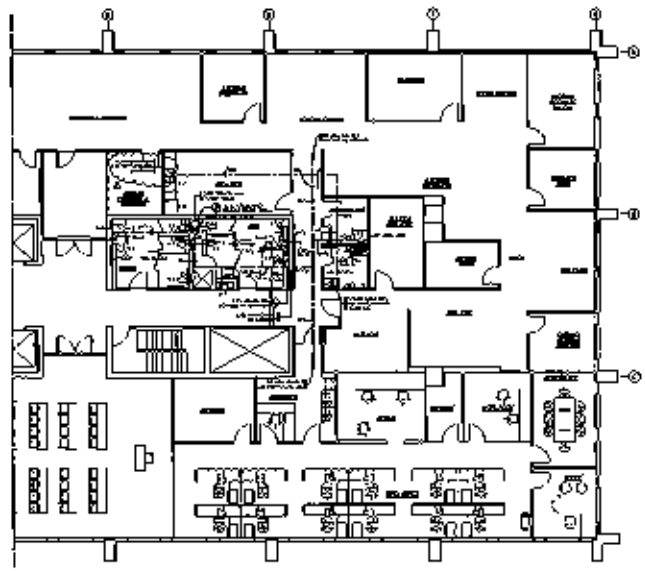

Ductwork Support Details  
 M-201





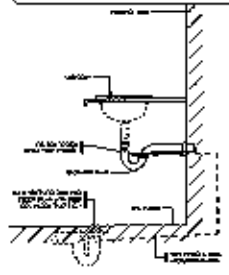


THIRD FLOOR PLAN SANITARY LAYOUT 2

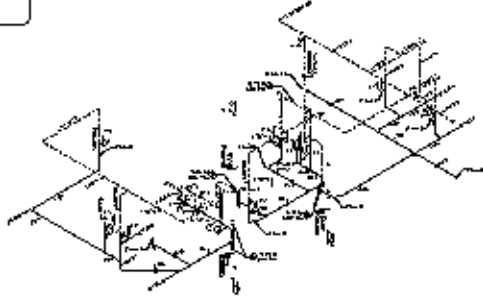


THIRD FLOOR PLAN VALVE & DISTRIBUTION LAYOUT 1

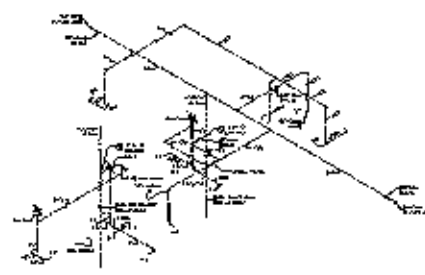
FOR INFORMATION PURPOSES ONLY



LAVATORY TRAP PRIMER DETAIL 5



SANITARY RISER 4



WATER OR NEUTRALIZER RISER 3

NOTED:

|    |      |      |
|----|------|------|
| 10 | REV. | DATE |
|    |      |      |
|    |      |      |

DASH OFFICE  
 2ND FLOOR APT 1120W  
 1000 W. 10TH ST.  
 DENVER, CO 80202  
 TEL: 333-7800  
 FAX: 333-7800

PROJECT: 1000 W. 10TH ST.  
 2ND FLOOR APT 1120W  
 THIRD FLOOR PLAN  
 PLUMBING LEVEL





PLUMBING FIXTURE SCHEDULE

| No. | Description  | Type   |      | Material   |        | Finish      |          | Accessories |          | Notes    |          |
|-----|--------------|--------|------|------------|--------|-------------|----------|-------------|----------|----------|----------|
|     |              | Symbol | Code | Material   | Finish | Accessories | Notes    | Notes       | Notes    |          |          |
| 1   | Water Closet | WC     | 1    | 1/2" x 10" | White  | Standard    | Standard | Standard    | Standard | Standard | Standard |
| 2   | Water Closet | WC     | 2    | 1/2" x 10" | White  | Standard    | Standard | Standard    | Standard | Standard | Standard |
| 3   | Water Closet | WC     | 3    | 1/2" x 10" | White  | Standard    | Standard | Standard    | Standard | Standard | Standard |
| 4   | Water Closet | WC     | 4    | 1/2" x 10" | White  | Standard    | Standard | Standard    | Standard | Standard | Standard |
| 5   | Water Closet | WC     | 5    | 1/2" x 10" | White  | Standard    | Standard | Standard    | Standard | Standard | Standard |
| 6   | Water Closet | WC     | 6    | 1/2" x 10" | White  | Standard    | Standard | Standard    | Standard | Standard | Standard |
| 7   | Water Closet | WC     | 7    | 1/2" x 10" | White  | Standard    | Standard | Standard    | Standard | Standard | Standard |
| 8   | Water Closet | WC     | 8    | 1/2" x 10" | White  | Standard    | Standard | Standard    | Standard | Standard | Standard |
| 9   | Water Closet | WC     | 9    | 1/2" x 10" | White  | Standard    | Standard | Standard    | Standard | Standard | Standard |
| 10  | Water Closet | WC     | 10   | 1/2" x 10" | White  | Standard    | Standard | Standard    | Standard | Standard | Standard |

**PIPING SPECIFICATIONS:**

| SIZE   | TYPE   | WALL THICKNESS | TEMPERATURE | PRESSURE | NOTES    |
|--------|--------|----------------|-------------|----------|----------|
| 1/2"   | Copper | 0.049"         | 180°F       | 150 PSI  | Standard |
| 3/4"   | Copper | 0.063"         | 180°F       | 150 PSI  | Standard |
| 1"     | Copper | 0.080"         | 180°F       | 150 PSI  | Standard |
| 1 1/2" | Copper | 0.109"         | 180°F       | 150 PSI  | Standard |
| 2"     | Copper | 0.147"         | 180°F       | 150 PSI  | Standard |
| 2 1/2" | Copper | 0.188"         | 180°F       | 150 PSI  | Standard |
| 3"     | Copper | 0.237"         | 180°F       | 150 PSI  | Standard |
| 3 1/2" | Copper | 0.291"         | 180°F       | 150 PSI  | Standard |
| 4"     | Copper | 0.350"         | 180°F       | 150 PSI  | Standard |
| 4 1/2" | Copper | 0.415"         | 180°F       | 150 PSI  | Standard |
| 5"     | Copper | 0.486"         | 180°F       | 150 PSI  | Standard |
| 6"     | Copper | 0.562"         | 180°F       | 150 PSI  | Standard |
| 8"     | Copper | 0.750"         | 180°F       | 150 PSI  | Standard |
| 10"    | Copper | 0.937"         | 180°F       | 150 PSI  | Standard |
| 12"    | Copper | 1.125"         | 180°F       | 150 PSI  | Standard |
| 14"    | Copper | 1.312"         | 180°F       | 150 PSI  | Standard |
| 16"    | Copper | 1.500"         | 180°F       | 150 PSI  | Standard |
| 18"    | Copper | 1.687"         | 180°F       | 150 PSI  | Standard |
| 20"    | Copper | 1.875"         | 180°F       | 150 PSI  | Standard |
| 24"    | Copper | 2.250"         | 180°F       | 150 PSI  | Standard |
| 30"    | Copper | 2.812"         | 180°F       | 150 PSI  | Standard |
| 36"    | Copper | 3.375"         | 180°F       | 150 PSI  | Standard |
| 42"    | Copper | 3.937"         | 180°F       | 150 PSI  | Standard |
| 48"    | Copper | 4.500"         | 180°F       | 150 PSI  | Standard |
| 54"    | Copper | 5.062"         | 180°F       | 150 PSI  | Standard |
| 60"    | Copper | 5.625"         | 180°F       | 150 PSI  | Standard |
| 72"    | Copper | 6.750"         | 180°F       | 150 PSI  | Standard |
| 84"    | Copper | 7.875"         | 180°F       | 150 PSI  | Standard |
| 96"    | Copper | 9.000"         | 180°F       | 150 PSI  | Standard |
| 108"   | Copper | 10.125"        | 180°F       | 150 PSI  | Standard |
| 120"   | Copper | 11.250"        | 180°F       | 150 PSI  | Standard |
| 144"   | Copper | 13.500"        | 180°F       | 150 PSI  | Standard |
| 168"   | Copper | 15.750"        | 180°F       | 150 PSI  | Standard |
| 192"   | Copper | 18.000"        | 180°F       | 150 PSI  | Standard |
| 216"   | Copper | 20.250"        | 180°F       | 150 PSI  | Standard |
| 240"   | Copper | 22.500"        | 180°F       | 150 PSI  | Standard |
| 288"   | Copper | 27.000"        | 180°F       | 150 PSI  | Standard |
| 336"   | Copper | 31.500"        | 180°F       | 150 PSI  | Standard |
| 384"   | Copper | 36.000"        | 180°F       | 150 PSI  | Standard |
| 432"   | Copper | 40.500"        | 180°F       | 150 PSI  | Standard |
| 480"   | Copper | 45.000"        | 180°F       | 150 PSI  | Standard |
| 528"   | Copper | 49.500"        | 180°F       | 150 PSI  | Standard |
| 576"   | Copper | 54.000"        | 180°F       | 150 PSI  | Standard |
| 624"   | Copper | 58.500"        | 180°F       | 150 PSI  | Standard |
| 672"   | Copper | 63.000"        | 180°F       | 150 PSI  | Standard |
| 720"   | Copper | 67.500"        | 180°F       | 150 PSI  | Standard |
| 768"   | Copper | 72.000"        | 180°F       | 150 PSI  | Standard |
| 816"   | Copper | 76.500"        | 180°F       | 150 PSI  | Standard |
| 864"   | Copper | 81.000"        | 180°F       | 150 PSI  | Standard |
| 912"   | Copper | 85.500"        | 180°F       | 150 PSI  | Standard |
| 960"   | Copper | 90.000"        | 180°F       | 150 PSI  | Standard |
| 1008"  | Copper | 94.500"        | 180°F       | 150 PSI  | Standard |
| 1056"  | Copper | 99.000"        | 180°F       | 150 PSI  | Standard |
| 1104"  | Copper | 103.500"       | 180°F       | 150 PSI  | Standard |
| 1152"  | Copper | 108.000"       | 180°F       | 150 PSI  | Standard |
| 1200"  | Copper | 112.500"       | 180°F       | 150 PSI  | Standard |
| 1248"  | Copper | 117.000"       | 180°F       | 150 PSI  | Standard |
| 1296"  | Copper | 121.500"       | 180°F       | 150 PSI  | Standard |
| 1344"  | Copper | 126.000"       | 180°F       | 150 PSI  | Standard |
| 1392"  | Copper | 130.500"       | 180°F       | 150 PSI  | Standard |
| 1440"  | Copper | 135.000"       | 180°F       | 150 PSI  | Standard |
| 1488"  | Copper | 139.500"       | 180°F       | 150 PSI  | Standard |
| 1536"  | Copper | 144.000"       | 180°F       | 150 PSI  | Standard |
| 1584"  | Copper | 148.500"       | 180°F       | 150 PSI  | Standard |
| 1632"  | Copper | 153.000"       | 180°F       | 150 PSI  | Standard |
| 1680"  | Copper | 157.500"       | 180°F       | 150 PSI  | Standard |
| 1728"  | Copper | 162.000"       | 180°F       | 150 PSI  | Standard |
| 1776"  | Copper | 166.500"       | 180°F       | 150 PSI  | Standard |
| 1824"  | Copper | 171.000"       | 180°F       | 150 PSI  | Standard |
| 1872"  | Copper | 175.500"       | 180°F       | 150 PSI  | Standard |
| 1920"  | Copper | 180.000"       | 180°F       | 150 PSI  | Standard |
| 1968"  | Copper | 184.500"       | 180°F       | 150 PSI  | Standard |
| 2016"  | Copper | 189.000"       | 180°F       | 150 PSI  | Standard |
| 2064"  | Copper | 193.500"       | 180°F       | 150 PSI  | Standard |
| 2112"  | Copper | 198.000"       | 180°F       | 150 PSI  | Standard |
| 2160"  | Copper | 202.500"       | 180°F       | 150 PSI  | Standard |
| 2208"  | Copper | 207.000"       | 180°F       | 150 PSI  | Standard |
| 2256"  | Copper | 211.500"       | 180°F       | 150 PSI  | Standard |
| 2304"  | Copper | 216.000"       | 180°F       | 150 PSI  | Standard |
| 2352"  | Copper | 220.500"       | 180°F       | 150 PSI  | Standard |
| 2400"  | Copper | 225.000"       | 180°F       | 150 PSI  | Standard |
| 2448"  | Copper | 229.500"       | 180°F       | 150 PSI  | Standard |
| 2496"  | Copper | 234.000"       | 180°F       | 150 PSI  | Standard |
| 2544"  | Copper | 238.500"       | 180°F       | 150 PSI  | Standard |
| 2592"  | Copper | 243.000"       | 180°F       | 150 PSI  | Standard |
| 2640"  | Copper | 247.500"       | 180°F       | 150 PSI  | Standard |
| 2688"  | Copper | 252.000"       | 180°F       | 150 PSI  | Standard |
| 2736"  | Copper | 256.500"       | 180°F       | 150 PSI  | Standard |
| 2784"  | Copper | 261.000"       | 180°F       | 150 PSI  | Standard |
| 2832"  | Copper | 265.500"       | 180°F       | 150 PSI  | Standard |
| 2880"  | Copper | 270.000"       | 180°F       | 150 PSI  | Standard |
| 2928"  | Copper | 274.500"       | 180°F       | 150 PSI  | Standard |
| 2976"  | Copper | 279.000"       | 180°F       | 150 PSI  | Standard |
| 3024"  | Copper | 283.500"       | 180°F       | 150 PSI  | Standard |
| 3072"  | Copper | 288.000"       | 180°F       | 150 PSI  | Standard |
| 3120"  | Copper | 292.500"       | 180°F       | 150 PSI  | Standard |
| 3168"  | Copper | 297.000"       | 180°F       | 150 PSI  | Standard |
| 3216"  | Copper | 301.500"       | 180°F       | 150 PSI  | Standard |
| 3264"  | Copper | 306.000"       | 180°F       | 150 PSI  | Standard |
| 3312"  | Copper | 310.500"       | 180°F       | 150 PSI  | Standard |
| 3360"  | Copper | 315.000"       | 180°F       | 150 PSI  | Standard |
| 3408"  | Copper | 319.500"       | 180°F       | 150 PSI  | Standard |
| 3456"  | Copper | 324.000"       | 180°F       | 150 PSI  | Standard |
| 3504"  | Copper | 328.500"       | 180°F       | 150 PSI  | Standard |
| 3552"  | Copper | 333.000"       | 180°F       | 150 PSI  | Standard |
| 3600"  | Copper | 337.500"       | 180°F       | 150 PSI  | Standard |
| 3648"  | Copper | 342.000"       | 180°F       | 150 PSI  | Standard |
| 3696"  | Copper | 346.500"       | 180°F       | 150 PSI  | Standard |
| 3744"  | Copper | 351.000"       | 180°F       | 150 PSI  | Standard |
| 3792"  | Copper | 355.500"       | 180°F       | 150 PSI  | Standard |
| 3840"  | Copper | 360.000"       | 180°F       | 150 PSI  | Standard |
| 3888"  | Copper | 364.500"       | 180°F       | 150 PSI  | Standard |
| 3936"  | Copper | 369.000"       | 180°F       | 150 PSI  | Standard |
| 3984"  | Copper | 373.500"       | 180°F       | 150 PSI  | Standard |
| 4032"  | Copper | 378.000"       | 180°F       | 150 PSI  | Standard |
| 4080"  | Copper | 382.500"       | 180°F       | 150 PSI  | Standard |
| 4128"  | Copper | 387.000"       | 180°F       | 150 PSI  | Standard |
| 4176"  | Copper | 391.500"       | 180°F       | 150 PSI  | Standard |
| 4224"  | Copper | 396.000"       | 180°F       | 150 PSI  | Standard |
| 4272"  | Copper | 400.500"       | 180°F       | 150 PSI  | Standard |
| 4320"  | Copper | 405.000"       | 180°F       | 150 PSI  | Standard |
| 4368"  | Copper | 409.500"       | 180°F       | 150 PSI  | Standard |
| 4416"  | Copper | 414.000"       | 180°F       | 150 PSI  | Standard |
| 4464"  | Copper | 418.500"       | 180°F       | 150 PSI  | Standard |
| 4512"  | Copper | 423.000"       | 180°F       | 150 PSI  | Standard |
| 4560"  | Copper | 427.500"       | 180°F       | 150 PSI  | Standard |
| 4608"  | Copper | 432.000"       | 180°F       | 150 PSI  | Standard |
| 4656"  | Copper | 436.500"       | 180°F       | 150 PSI  | Standard |
| 4704"  | Copper | 441.000"       | 180°F       | 150 PSI  | Standard |
| 4752"  | Copper | 445.500"       | 180°F       | 150 PSI  | Standard |
| 4800"  | Copper | 450.000"       | 180°F       | 150 PSI  | Standard |
| 4848"  | Copper | 454.500"       | 180°F       | 150 PSI  | Standard |
| 4896"  | Copper | 459.000"       | 180°F       | 150 PSI  | Standard |
| 4944"  | Copper | 463.500"       | 180°F       | 150 PSI  | Standard |
| 4992"  | Copper | 468.000"       | 180°F       | 150 PSI  | Standard |
| 5040"  | Copper | 472.500"       | 180°F       | 150 PSI  | Standard |
| 5088"  | Copper | 477.000"       | 180°F       | 150 PSI  | Standard |
| 5136"  | Copper | 481.500"       | 180°F       | 150 PSI  | Standard |
| 5184"  | Copper | 486.000"       | 180°F       | 150 PSI  | Standard |
| 5232"  | Copper | 490.500"       | 180°F       | 150 PSI  | Standard |
| 5280"  | Copper | 495.000"       | 180°F       | 150 PSI  | Standard |
| 5328"  | Copper | 499.500"       | 180°F       | 150 PSI  | Standard |
| 5376"  | Copper | 504.000"       | 180°F       | 150 PSI  | Standard |
| 5424"  | Copper | 508.500"       | 180°F       | 150 PSI  | Standard |
| 5472"  | Copper | 513.000"       | 180°F       | 150 PSI  | Standard |
| 5520"  | Copper | 517.500"       | 180°F       | 150 PSI  | Standard |
| 5568"  | Copper | 522.000"       | 180°F       | 150 PSI  | Standard |
| 5616"  | Copper | 526.500"       | 180°F       | 150 PSI  | Standard |
| 5664"  | Copper | 531.000"       | 180°F       | 150 PSI  | Standard |
| 5712"  | Copper | 535.500"       | 180°F       | 150 PSI  | Standard |
| 5760"  | Copper | 540.000"       | 180°F       | 150 PSI  | Standard |
| 5808"  | Copper | 544.500"       | 180°F       | 150 PSI  | Standard |
| 5856"  | Copper | 549.000"       | 180°F       | 150 PSI  | Standard |
| 5904"  | Copper | 553.500"       | 180°F       | 150 PSI  | Standard |
| 5952"  | Copper | 558.000"       | 180°F       | 150 PSI  | Standard |
| 6000"  | Copper | 562.500"       | 180°F       | 150 PSI  | Standard |
| 6048"  | Copper | 567.000"       | 180°F       | 150 PSI  | Standard |
| 6096"  | Copper | 571.500"       | 180°F       | 150 PSI  | Standard |
| 6144"  | Copper | 576.000"       | 180°F       | 150 PSI  | Standard |
| 6192"  | Copper | 580.500"       | 180°F       | 150 PSI  | Standard |
| 6240"  | Copper | 585.000"       | 180°F       | 150 PSI  | Standard |
| 6288"  | Copper | 589.500"       | 180°F       | 150 PSI  | Standard |
| 6336"  | Copper | 594.000"       | 180°F       | 150 PSI  | Standard |
| 6384"  | Copper | 598.500"       | 180°F       | 150 PSI  | Standard |
| 6432"  | Copper | 603.000"       | 180°F       | 150 PSI  | Standard |
| 6480"  | Copper | 607.500"       | 180°F       | 150 PSI  | Standard |
| 6528"  | Copper | 612.000"       | 180°F       | 150 PSI  | Standard |
| 6576"  | Copper | 616.500"       | 180°F       | 150 PSI  | Standard |
| 6624"  | Copper | 621.000"       | 180°F       | 150 PSI  | Standard |
| 6672"  | Copper | 625.500"       | 180°F       | 150 PSI  | Standard |
| 6720"  | Copper | 630.000"       | 180°F       | 150 PSI  | Standard |
| 6768"  | Copper | 634.500"       | 180°F       | 150 PSI  | Standard |
| 6816"  | Copper | 639.000"       | 180°F       | 150 PSI  | Standard |
| 6864"  | Copper | 643.500"       | 180°F       | 150 PSI  | Standard |
| 6912"  | Copper | 648.000"       | 180°F       | 150 PSI  |          |





**ABBREVIATIONS**

|            |      |
|------------|------|
| ALUMINUM   | ALUM |
| ASBESTOS   | ASB  |
| BRICK      | BRK  |
| CONCRETE   | CON  |
| GLASS      | GLS  |
| INSULATION | INS  |
| IRON       | IRN  |
| STEEL      | STL  |
| WOOD       | WOD  |
| ...        | ...  |

**COMMON SYMBOLS**

- 1. ...
- 2. ...
- 3. ...
- 4. ...
- 5. ...
- 6. ...
- 7. ...
- 8. ...
- 9. ...
- 10. ...
- 11. ...
- 12. ...
- 13. ...
- 14. ...
- 15. ...
- 16. ...
- 17. ...
- 18. ...
- 19. ...
- 20. ...

**MECHANICAL SYMBOLS**

- 1. ...
- 2. ...
- 3. ...
- 4. ...
- 5. ...
- 6. ...
- 7. ...
- 8. ...
- 9. ...
- 10. ...
- 11. ...
- 12. ...
- 13. ...
- 14. ...
- 15. ...
- 16. ...
- 17. ...
- 18. ...
- 19. ...
- 20. ...

**PLUMBING SYMBOLS**

- 1. ...
- 2. ...
- 3. ...
- 4. ...
- 5. ...
- 6. ...
- 7. ...
- 8. ...
- 9. ...
- 10. ...
- 11. ...
- 12. ...
- 13. ...
- 14. ...
- 15. ...
- 16. ...
- 17. ...
- 18. ...
- 19. ...
- 20. ...

**ELECTRICAL SYMBOLS**

- 1. ...
- 2. ...
- 3. ...
- 4. ...
- 5. ...
- 6. ...
- 7. ...
- 8. ...
- 9. ...
- 10. ...
- 11. ...
- 12. ...
- 13. ...
- 14. ...
- 15. ...
- 16. ...
- 17. ...
- 18. ...
- 19. ...
- 20. ...

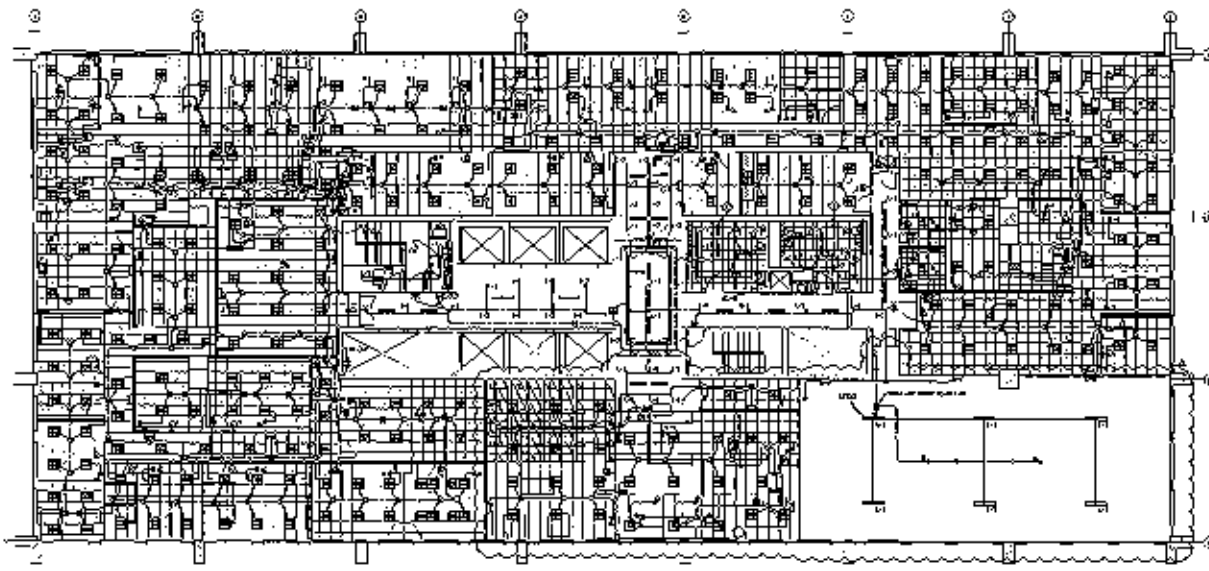
**GENERAL NOTES**

- 1. ...
- 2. ...
- 3. ...
- 4. ...
- 5. ...
- 6. ...
- 7. ...
- 8. ...
- 9. ...
- 10. ...
- 11. ...
- 12. ...
- 13. ...
- 14. ...
- 15. ...
- 16. ...
- 17. ...
- 18. ...
- 19. ...
- 20. ...

FOR INFORMATION PURPOSES ONLY

| LEGEND & NOTES |     |
|----------------|-----|
| ...            | ... |
| ...            | ... |
| ...            | ... |
| ...            | ... |

← SEE E-1 FOR NOTES



**LIGHTING PLAN**  
LEVEL 7

**NOTES:**  
1. ALL LIGHTING FIXTURES SHALL BE INSTALLED IN ACCORDANCE WITH THE IBC AND ALL APPLICABLE CODES AND REGULATIONS.  
2. ALL LIGHTING FIXTURES SHALL BE INSTALLED IN ACCORDANCE WITH THE IBC AND ALL APPLICABLE CODES AND REGULATIONS.  
3. ALL LIGHTING FIXTURES SHALL BE INSTALLED IN ACCORDANCE WITH THE IBC AND ALL APPLICABLE CODES AND REGULATIONS.

FOR INFORMATION  
PURPOSES ONLY

**LEGEND:**

|   |                    |
|---|--------------------|
| ○ | RECESSED DOWNLIGHT |
| □ | RECESSED DOWNLIGHT |
| △ | RECESSED DOWNLIGHT |
| ◇ | RECESSED DOWNLIGHT |
| ◇ | RECESSED DOWNLIGHT |

**DACO REGIONAL OFFICES 3RD FLOOR**  
MEETING ROOMS  
CONFERENCE ROOMS  
OFFICES  
RECEPTION AREA  
CORRIDORS  
ELEVATOR SHAFTS  
STAIRWELLS



**LIGHTING PLAN (LEVEL 7)** A-15  
DATE: 12/31/2024

| LIGHTING PLAN |                |
|---------------|----------------|
| PROJECT       | ACROSS SEASONS |
| NO.           | 001            |
| DATE          | 12/31/2024     |
| BY            | 12/31/2024     |

E-1







MECHANICAL SCHEDULE

Table with columns for material, quantity, and unit. Includes items like 1/2" GALV. STEEL, 1/4" GALV. STEEL, etc.

Table with columns for material, quantity, and unit. Includes items like 1/2" GALV. STEEL, 1/4" GALV. STEEL, etc.

Table with columns for material, quantity, and unit. Includes items like 1/2" GALV. STEEL, 1/4" GALV. STEEL, etc.

ELECTRICAL SCHEDULE

Table with columns for material, quantity, and unit. Includes items like 1/2" GALV. STEEL, 1/4" GALV. STEEL, etc.

Table with columns for material, quantity, and unit. Includes items like 1/2" GALV. STEEL, 1/4" GALV. STEEL, etc.

Table with columns for material, quantity, and unit. Includes items like 1/2" GALV. STEEL, 1/4" GALV. STEEL, etc.

Table with columns for material, quantity, and unit. Includes items like 1/2" GALV. STEEL, 1/4" GALV. STEEL, etc.

Table with columns for material, quantity, and unit. Includes items like 1/2" GALV. STEEL, 1/4" GALV. STEEL, etc.

LUMINAIRE SCHEDULE

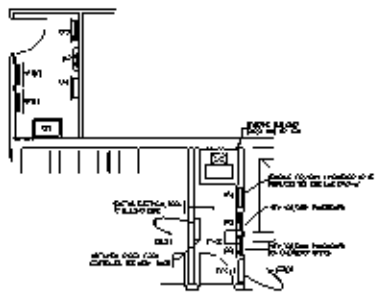
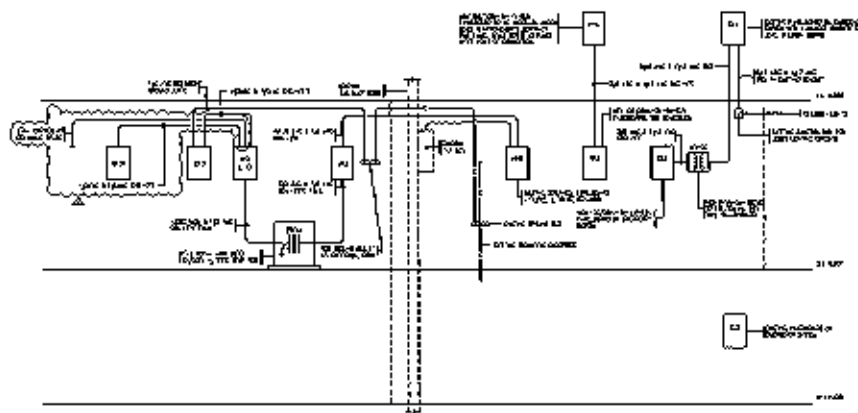
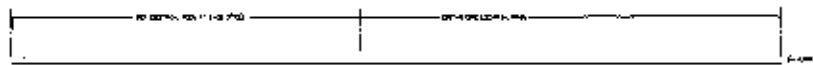
Table with columns for material, quantity, and unit. Includes items like 1/2" GALV. STEEL, 1/4" GALV. STEEL, etc.

FOR INFORMATION PURPOSES ONLY

DAGO REGIONAL OFFICE 3RD FLOOR... WASHINGTON, DC... 20004

PANEL SCHEDULES... A-18





**CENTRAL ROOM CHASSED PLANS - LEAD 1**

**NOTE:**  
 1. CONTROL UNIT SHALL BE INSTALLED IN THE ROOM SHOWN ON THIS PLAN AND SHALL BE CONNECTED TO THE CABLE AS SHOWN ON THIS PLAN.  
 2. THE CONTROL UNIT SHALL BE INSTALLED IN THE ROOM SHOWN ON THIS PLAN AND SHALL BE CONNECTED TO THE CABLE AS SHOWN ON THIS PLAN.  
 3. THE CONTROL UNIT SHALL BE INSTALLED IN THE ROOM SHOWN ON THIS PLAN AND SHALL BE CONNECTED TO THE CABLE AS SHOWN ON THIS PLAN.

FOR INFORMATION  
PURPOSES ONLY

**LEGEND:**

|        |             |
|--------|-------------|
| Symbol | Description |
| Symbol | Description |
| Symbol | Description |
| Symbol | Description |
| Symbol | Description |

**DIAO REGIONAL OFFICE 3RD FLOOR**  
 (Various symbols and text)

**JRR** (Logo)

**DIAGRAM & DETAILS**

|     |          |
|-----|----------|
| NO. | DATE     |
| 1   | 10/10/51 |
| 2   | 11/10/51 |
| 3   | 12/10/51 |
| 4   | 1/10/52  |
| 5   | 2/10/52  |
| 6   | 3/10/52  |
| 7   | 4/10/52  |
| 8   | 5/10/52  |
| 9   | 6/10/52  |
| 10  | 7/10/52  |
| 11  | 8/10/52  |
| 12  | 9/10/52  |
| 13  | 10/10/52 |
| 14  | 11/10/52 |
| 15  | 12/10/52 |
| 16  | 1/10/53  |
| 17  | 2/10/53  |
| 18  | 3/10/53  |
| 19  | 4/10/53  |
| 20  | 5/10/53  |
| 21  | 6/10/53  |
| 22  | 7/10/53  |
| 23  | 8/10/53  |
| 24  | 9/10/53  |
| 25  | 10/10/53 |
| 26  | 11/10/53 |
| 27  | 12/10/53 |
| 28  | 1/10/54  |
| 29  | 2/10/54  |
| 30  | 3/10/54  |
| 31  | 4/10/54  |
| 32  | 5/10/54  |
| 33  | 6/10/54  |
| 34  | 7/10/54  |
| 35  | 8/10/54  |
| 36  | 9/10/54  |
| 37  | 10/10/54 |
| 38  | 11/10/54 |
| 39  | 12/10/54 |
| 40  | 1/10/55  |
| 41  | 2/10/55  |
| 42  | 3/10/55  |
| 43  | 4/10/55  |
| 44  | 5/10/55  |
| 45  | 6/10/55  |
| 46  | 7/10/55  |
| 47  | 8/10/55  |
| 48  | 9/10/55  |
| 49  | 10/10/55 |
| 50  | 11/10/55 |
| 51  | 12/10/55 |
| 52  | 1/10/56  |
| 53  | 2/10/56  |
| 54  | 3/10/56  |
| 55  | 4/10/56  |
| 56  | 5/10/56  |
| 57  | 6/10/56  |
| 58  | 7/10/56  |
| 59  | 8/10/56  |
| 60  | 9/10/56  |
| 61  | 10/10/56 |
| 62  | 11/10/56 |
| 63  | 12/10/56 |
| 64  | 1/10/57  |
| 65  | 2/10/57  |
| 66  | 3/10/57  |
| 67  | 4/10/57  |
| 68  | 5/10/57  |
| 69  | 6/10/57  |
| 70  | 7/10/57  |
| 71  | 8/10/57  |
| 72  | 9/10/57  |
| 73  | 10/10/57 |
| 74  | 11/10/57 |
| 75  | 12/10/57 |
| 76  | 1/10/58  |
| 77  | 2/10/58  |
| 78  | 3/10/58  |
| 79  | 4/10/58  |
| 80  | 5/10/58  |
| 81  | 6/10/58  |
| 82  | 7/10/58  |
| 83  | 8/10/58  |
| 84  | 9/10/58  |
| 85  | 10/10/58 |
| 86  | 11/10/58 |
| 87  | 12/10/58 |
| 88  | 1/10/59  |
| 89  | 2/10/59  |
| 90  | 3/10/59  |
| 91  | 4/10/59  |
| 92  | 5/10/59  |
| 93  | 6/10/59  |
| 94  | 7/10/59  |
| 95  | 8/10/59  |
| 96  | 9/10/59  |
| 97  | 10/10/59 |
| 98  | 11/10/59 |
| 99  | 12/10/59 |
| 100 | 1/10/60  |