

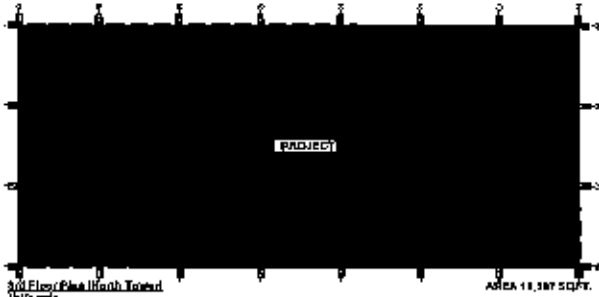
# Attachment 1 of Addendum 2

January 18, 2023



MUNICIPALITY OF SAN JUAN # 26000 MAP  
(MAPA CALIFICACION DE SUELOS) - Elevation Date: 11-27-2007  
Scale: 1"=100' Map Number: 30

FOR INFORMATION  
PURPOSES ONLY



3rd Floor Glass Elevator Tower  
2020 scale

AREA: 11,387 SQ.FT.

INDEX	
TITLE	INDEX, DRAWING, LOCATION AND PLOUGH MAPS
<b>Mechanical</b>	
M-100	SCHEMATIC PLAN
M-101	FLOOR PLAN & PARTITION SCHEDULE
M-102	DIFFUSED CEILING PLAN
M-103	PLUMBING PLAN
M-104	PLUMBING DETAILS
M-105	SECTION & DETAILS
M-106	DOCS SCHEDULES & DETAILS
M-107	KITCHEN PLUMBING DETAILS
M-108	PLUMB SCHEDULE, DETAILS & GENERAL NOTES
M-109	DETAILS
<b>Mechanical</b>	
M-110	MECHANICAL AIR CONDITIONING AND VENTILATION LAYOUTS
M-111	PROPOSED AIR CONDITIONING AND VENTILATION LAYOUTS
M-112	LEGEND, CONTROLS AND SCHEDULES
M-113	DUCTWORK SUPPORT DETAILS
M-114	SCHEDULES AND NOTES
<b>Fire Protection</b>	
FP-100	FIRE PROTECTION LAYOUT
<b>Plumbing</b>	
P-100	PLUMBING LAYOUT & LEGEND
P-101	SECTION, LEGEND & GENERAL NOTES
P-102	PIPE SUPPORT DETAILS AND SCHEDULES
P-103	PLUMBING SCHEDULES
P-104	PLUMBING SCHEDULES
<b>Electrical</b>	
E-0	LEGEND & NOTES
E-1	LIGHTING PLAN
E-2	POWER PLAN
E-3	COMMUNICATIONS PLAN
E-4	WALL SCHEDULES
E-5	WIRING & DETAILS
E-6	ONE-LINE DIAGRAM



Location Map  
Scale: 1"=1000'  
Projection: NAD 83  
Map Number: 300020099  
Elevation Date: 04-18-2005



Site Map (E.M.A.)  
Scale: 1"=100'

DACO Offices 3rd Floor AEP 1120W North Tower  
Roberto Sanchez Vilella Government Center

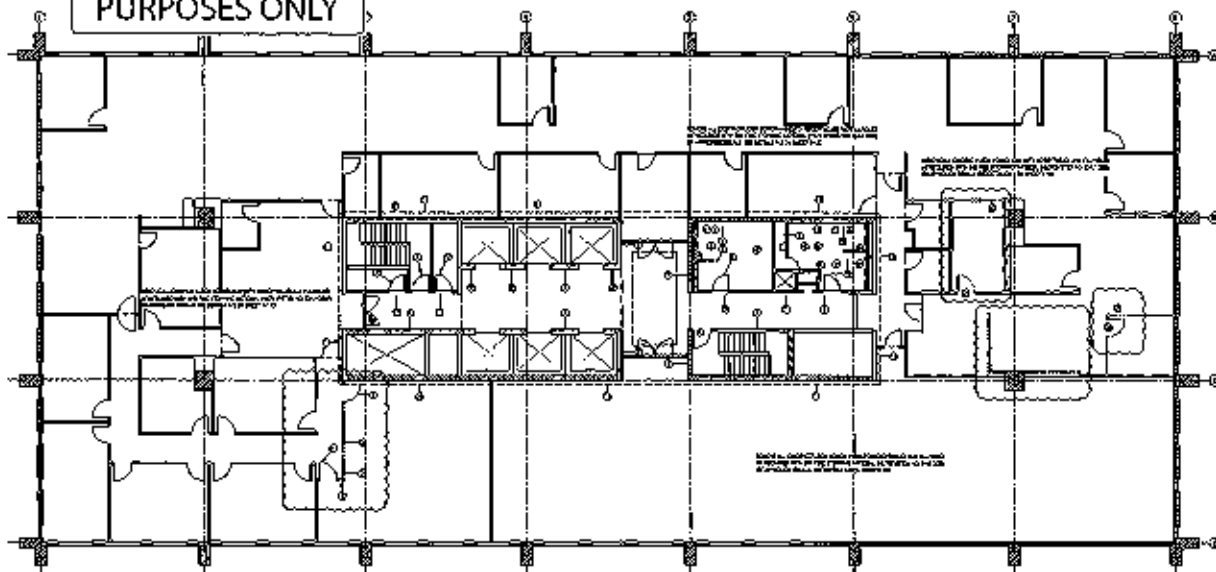
**A D + G**

P.O. Box 270164 San Juan, P.R. 00928-2844  
T. 787.764.1111 [adg@adg.com](mailto:adg@adg.com) T. 787.762.8707

De Diego Avenue

Santurce, Puerto Rico

FOR INFORMATION PURPOSES ONLY



- DEMOLITION NOTES:**
- REMOVE EXISTING WALLS AND RECONSTRUCT WITH CONCRETE BLOCK.
  - REMOVE EXISTING CEILING AND RECONSTRUCT WITH CONCRETE SLAB.
  - REMOVE EXISTING FLOOR AND RECONSTRUCT WITH CONCRETE SLAB.
  - REMOVE EXISTING DOORS AND RECONSTRUCT WITH CONCRETE BLOCK.
  - REMOVE EXISTING WINDOWS AND RECONSTRUCT WITH CONCRETE BLOCK.
  - REMOVE EXISTING STAIRS AND RECONSTRUCT WITH CONCRETE BLOCK.
  - REMOVE EXISTING ELEVATOR AND RECONSTRUCT WITH CONCRETE BLOCK.
  - REMOVE EXISTING MECHANICAL ROOMS AND RECONSTRUCT WITH CONCRETE BLOCK.
  - REMOVE EXISTING ELECTRICAL ROOMS AND RECONSTRUCT WITH CONCRETE BLOCK.
  - REMOVE EXISTING TELEPHONE ROOMS AND RECONSTRUCT WITH CONCRETE BLOCK.
  - REMOVE EXISTING JANUARY ROOMS AND RECONSTRUCT WITH CONCRETE BLOCK.
  - REMOVE EXISTING RESTROOMS AND RECONSTRUCT WITH CONCRETE BLOCK.
  - REMOVE EXISTING OFFICES AND RECONSTRUCT WITH CONCRETE BLOCK.
  - REMOVE EXISTING STORAGE ROOMS AND RECONSTRUCT WITH CONCRETE BLOCK.
  - REMOVE EXISTING CORRIDORS AND RECONSTRUCT WITH CONCRETE BLOCK.
  - REMOVE EXISTING ENTRANCES AND RECONSTRUCT WITH CONCRETE BLOCK.

**LEGEND:**

REMOVE EXISTING WALLS AND RECONSTRUCT WITH CONCRETE BLOCK

REMOVE EXISTING CEILING AND RECONSTRUCT WITH CONCRETE SLAB

REMOVE EXISTING FLOOR AND RECONSTRUCT WITH CONCRETE SLAB

REMOVE EXISTING DOORS AND RECONSTRUCT WITH CONCRETE BLOCK

REMOVE EXISTING WINDOWS AND RECONSTRUCT WITH CONCRETE BLOCK

REMOVE EXISTING STAIRS AND RECONSTRUCT WITH CONCRETE BLOCK

REMOVE EXISTING ELEVATOR AND RECONSTRUCT WITH CONCRETE BLOCK

REMOVE EXISTING MECHANICAL ROOMS AND RECONSTRUCT WITH CONCRETE BLOCK

REMOVE EXISTING ELECTRICAL ROOMS AND RECONSTRUCT WITH CONCRETE BLOCK

REMOVE EXISTING TELEPHONE ROOMS AND RECONSTRUCT WITH CONCRETE BLOCK

REMOVE EXISTING JANUARY ROOMS AND RECONSTRUCT WITH CONCRETE BLOCK

REMOVE EXISTING RESTROOMS AND RECONSTRUCT WITH CONCRETE BLOCK

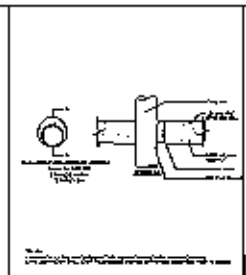
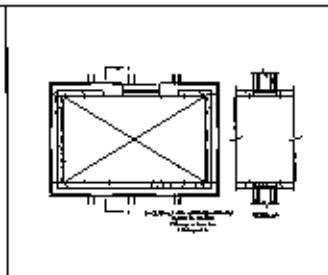
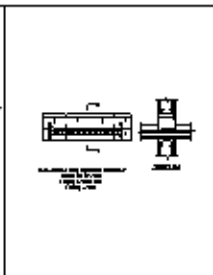
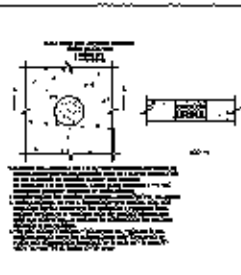
REMOVE EXISTING OFFICES AND RECONSTRUCT WITH CONCRETE BLOCK

REMOVE EXISTING STORAGE ROOMS AND RECONSTRUCT WITH CONCRETE BLOCK

REMOVE EXISTING CORRIDORS AND RECONSTRUCT WITH CONCRETE BLOCK

REMOVE EXISTING ENTRANCES AND RECONSTRUCT WITH CONCRETE BLOCK

DEMOLITION PLAN E-18



- GENERAL NOTES:**
- REMOVE EXISTING WALLS AND RECONSTRUCT WITH CONCRETE BLOCK.
  - REMOVE EXISTING CEILING AND RECONSTRUCT WITH CONCRETE SLAB.
  - REMOVE EXISTING FLOOR AND RECONSTRUCT WITH CONCRETE SLAB.
  - REMOVE EXISTING DOORS AND RECONSTRUCT WITH CONCRETE BLOCK.
  - REMOVE EXISTING WINDOWS AND RECONSTRUCT WITH CONCRETE BLOCK.
  - REMOVE EXISTING STAIRS AND RECONSTRUCT WITH CONCRETE BLOCK.
  - REMOVE EXISTING ELEVATOR AND RECONSTRUCT WITH CONCRETE BLOCK.
  - REMOVE EXISTING MECHANICAL ROOMS AND RECONSTRUCT WITH CONCRETE BLOCK.
  - REMOVE EXISTING ELECTRICAL ROOMS AND RECONSTRUCT WITH CONCRETE BLOCK.
  - REMOVE EXISTING TELEPHONE ROOMS AND RECONSTRUCT WITH CONCRETE BLOCK.
  - REMOVE EXISTING JANUARY ROOMS AND RECONSTRUCT WITH CONCRETE BLOCK.
  - REMOVE EXISTING RESTROOMS AND RECONSTRUCT WITH CONCRETE BLOCK.
  - REMOVE EXISTING OFFICES AND RECONSTRUCT WITH CONCRETE BLOCK.
  - REMOVE EXISTING STORAGE ROOMS AND RECONSTRUCT WITH CONCRETE BLOCK.
  - REMOVE EXISTING CORRIDORS AND RECONSTRUCT WITH CONCRETE BLOCK.
  - REMOVE EXISTING ENTRANCES AND RECONSTRUCT WITH CONCRETE BLOCK.

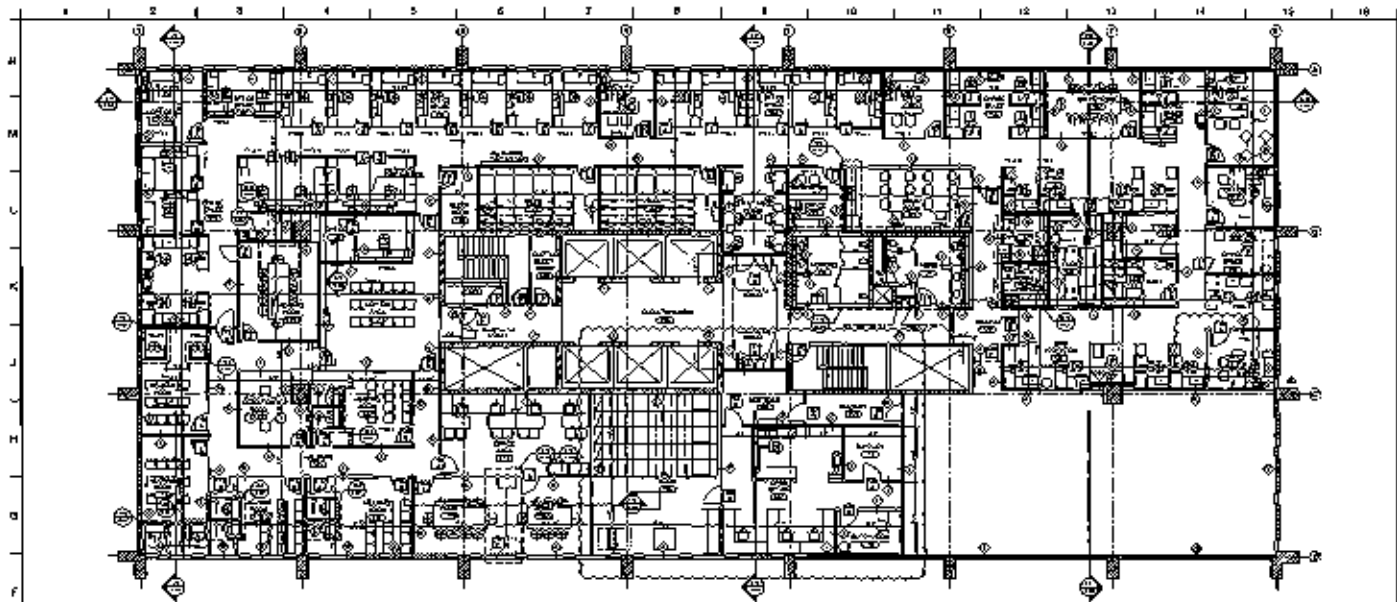
**REVISIONS:**

NO.	DATE	BY	REVISION
1			
2			
3			
4			
5			
6			
7			
8			
9			
10			
11			
12			
13			
14			
15			
16			
17			
18			
19			
20			

**REVISIONS:**

NO. DATE BY REVISION

1 2 3 4 5 6 7 8 9 10 11 12 13 14 15 16 17 18 19 20



- NOTES:**
1. ALL WORK SHALL BE IN ACCORDANCE WITH THE LATEST EDITIONS OF THE BUILDING CODES AND SPECIFICATIONS.
  2. ALL WORK SHALL BE IN ACCORDANCE WITH THE LATEST EDITIONS OF THE BUILDING CODES AND SPECIFICATIONS.
  3. ALL WORK SHALL BE IN ACCORDANCE WITH THE LATEST EDITIONS OF THE BUILDING CODES AND SPECIFICATIONS.
  4. ALL WORK SHALL BE IN ACCORDANCE WITH THE LATEST EDITIONS OF THE BUILDING CODES AND SPECIFICATIONS.
  5. ALL WORK SHALL BE IN ACCORDANCE WITH THE LATEST EDITIONS OF THE BUILDING CODES AND SPECIFICATIONS.
  6. ALL WORK SHALL BE IN ACCORDANCE WITH THE LATEST EDITIONS OF THE BUILDING CODES AND SPECIFICATIONS.
  7. ALL WORK SHALL BE IN ACCORDANCE WITH THE LATEST EDITIONS OF THE BUILDING CODES AND SPECIFICATIONS.
  8. ALL WORK SHALL BE IN ACCORDANCE WITH THE LATEST EDITIONS OF THE BUILDING CODES AND SPECIFICATIONS.
  9. ALL WORK SHALL BE IN ACCORDANCE WITH THE LATEST EDITIONS OF THE BUILDING CODES AND SPECIFICATIONS.
  10. ALL WORK SHALL BE IN ACCORDANCE WITH THE LATEST EDITIONS OF THE BUILDING CODES AND SPECIFICATIONS.
  11. ALL WORK SHALL BE IN ACCORDANCE WITH THE LATEST EDITIONS OF THE BUILDING CODES AND SPECIFICATIONS.
  12. ALL WORK SHALL BE IN ACCORDANCE WITH THE LATEST EDITIONS OF THE BUILDING CODES AND SPECIFICATIONS.
  13. ALL WORK SHALL BE IN ACCORDANCE WITH THE LATEST EDITIONS OF THE BUILDING CODES AND SPECIFICATIONS.
  14. ALL WORK SHALL BE IN ACCORDANCE WITH THE LATEST EDITIONS OF THE BUILDING CODES AND SPECIFICATIONS.
  15. ALL WORK SHALL BE IN ACCORDANCE WITH THE LATEST EDITIONS OF THE BUILDING CODES AND SPECIFICATIONS.
  16. ALL WORK SHALL BE IN ACCORDANCE WITH THE LATEST EDITIONS OF THE BUILDING CODES AND SPECIFICATIONS.
- LEGEND:**
- 1. WALL
  - 2. DOOR
  - 3. WINDOW
  - 4. STAIR
  - 5. ELEVATOR
  - 6. MECHANICAL
  - 7. ELECTRICAL
  - 8. PLUMBING
  - 9. FURNITURE
  - 10. EQUIPMENT
  - 11. SIGNAGE
  - 12. LIGHTING
  - 13. VENTILATION
  - 14. SECURITY
  - 15. ACCESSIBILITY
  - 16. OTHER

FLOOR PLAN (LEVEL 3) P-16

FOR INFORMATION  
PURPOSES ONLY

PARTITION SCHEDULE	PARTITION MATERIALS
1. 1/2" Gypsum Board on metal studs with 5/8" x 3/4" wood joist hangers	1. 1/2" Gypsum Board on metal studs with 5/8" x 3/4" wood joist hangers
2. 1/2" Gypsum Board on metal studs with 5/8" x 3/4" wood joist hangers	2. 1/2" Gypsum Board on metal studs with 5/8" x 3/4" wood joist hangers
3. 1/2" Gypsum Board on metal studs with 5/8" x 3/4" wood joist hangers	3. 1/2" Gypsum Board on metal studs with 5/8" x 3/4" wood joist hangers
4. 1/2" Gypsum Board on metal studs with 5/8" x 3/4" wood joist hangers	4. 1/2" Gypsum Board on metal studs with 5/8" x 3/4" wood joist hangers
5. 1/2" Gypsum Board on metal studs with 5/8" x 3/4" wood joist hangers	5. 1/2" Gypsum Board on metal studs with 5/8" x 3/4" wood joist hangers
6. 1/2" Gypsum Board on metal studs with 5/8" x 3/4" wood joist hangers	6. 1/2" Gypsum Board on metal studs with 5/8" x 3/4" wood joist hangers
7. 1/2" Gypsum Board on metal studs with 5/8" x 3/4" wood joist hangers	7. 1/2" Gypsum Board on metal studs with 5/8" x 3/4" wood joist hangers
8. 1/2" Gypsum Board on metal studs with 5/8" x 3/4" wood joist hangers	8. 1/2" Gypsum Board on metal studs with 5/8" x 3/4" wood joist hangers
9. 1/2" Gypsum Board on metal studs with 5/8" x 3/4" wood joist hangers	9. 1/2" Gypsum Board on metal studs with 5/8" x 3/4" wood joist hangers
10. 1/2" Gypsum Board on metal studs with 5/8" x 3/4" wood joist hangers	10. 1/2" Gypsum Board on metal studs with 5/8" x 3/4" wood joist hangers
11. 1/2" Gypsum Board on metal studs with 5/8" x 3/4" wood joist hangers	11. 1/2" Gypsum Board on metal studs with 5/8" x 3/4" wood joist hangers
12. 1/2" Gypsum Board on metal studs with 5/8" x 3/4" wood joist hangers	12. 1/2" Gypsum Board on metal studs with 5/8" x 3/4" wood joist hangers
13. 1/2" Gypsum Board on metal studs with 5/8" x 3/4" wood joist hangers	13. 1/2" Gypsum Board on metal studs with 5/8" x 3/4" wood joist hangers
14. 1/2" Gypsum Board on metal studs with 5/8" x 3/4" wood joist hangers	14. 1/2" Gypsum Board on metal studs with 5/8" x 3/4" wood joist hangers
15. 1/2" Gypsum Board on metal studs with 5/8" x 3/4" wood joist hangers	15. 1/2" Gypsum Board on metal studs with 5/8" x 3/4" wood joist hangers
16. 1/2" Gypsum Board on metal studs with 5/8" x 3/4" wood joist hangers	16. 1/2" Gypsum Board on metal studs with 5/8" x 3/4" wood joist hangers

NOTE: 1. ALL WORK SHALL BE IN ACCORDANCE WITH THE LATEST EDITIONS OF THE BUILDING CODES AND SPECIFICATIONS.

SCHEDULE A-4

DATA OFFICES  
BY FLOOR PLAN 11/20/00

PROPOSED FLOOR

A-101





NOTES:																																									
TYPICAL A		TYPICAL B		TYPICAL C		TYPICAL D		TYPICAL E		TYPICAL F		TYPICAL G																													
TYPICAL H		TYPICAL I		TYPICAL J		TYPICAL K		TYPICAL L		TYPICAL M		TYPICAL N																													
TYPICAL P		TYPICAL R		TYPICAL T		TYPICAL U		TYPICAL V		TYPICAL W		TYPICAL X		TYPICAL Y																											
TYPICAL Q		TYPICAL S		TYPICAL T						TYPICAL Z		TYPICAL 2																													
FURNITURE TYPICALS												A/H																													
1												2		3		4		5		6		7		8		9		10		11		12		13		14		15		16	
N												M		L		K		J		I		H		G		F		E		D		C		B		A					

**FOR INFORMATION  
PURPOSES ONLY**

**BAGG OFFICES  
3rd FLOOR JEP 1130W**

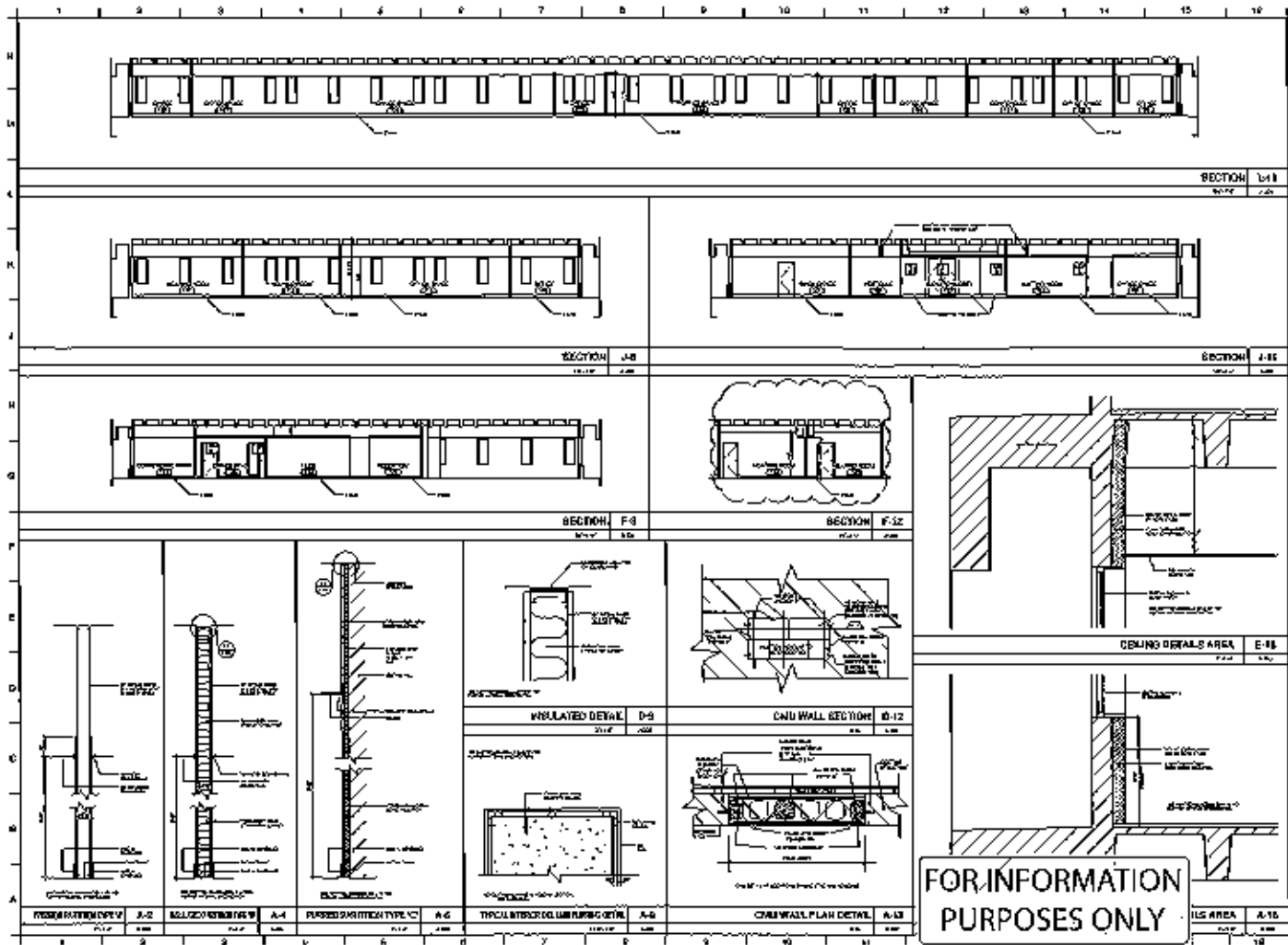
SCALE: 1/8" = 1'-0"

DATE: 11/11/11

BY: [Signature]

**FURNITURE TYP.**

NO.	DATE	BY
1	11/11/11	[Signature]
2		
3		
4		



**LEGEND:**

- Concrete
- ▨ Masonry
- ▤ Insulation
- ▧ Gypsum
- ▩ Drywall
- Wood
- ▬ Steel
- ▮ Glass
- ▯ Glass
- ▰ Glass
- ▱ Glass

1	2	3	4	5	6	7	8	9	10	11	12	13	14	15	16
---	---	---	---	---	---	---	---	---	----	----	----	----	----	----	----

**CEILING DETAILS AREA E-11**

**BASE CEMENT SURFLOOR (2" MIN)**

1. 2" MIN. THICKNESS

2. 1/2" MIN. THICKNESS

3. 1/2" MIN. THICKNESS

4. 1/2" MIN. THICKNESS

**FOR INFORMATION PURPOSES ONLY**

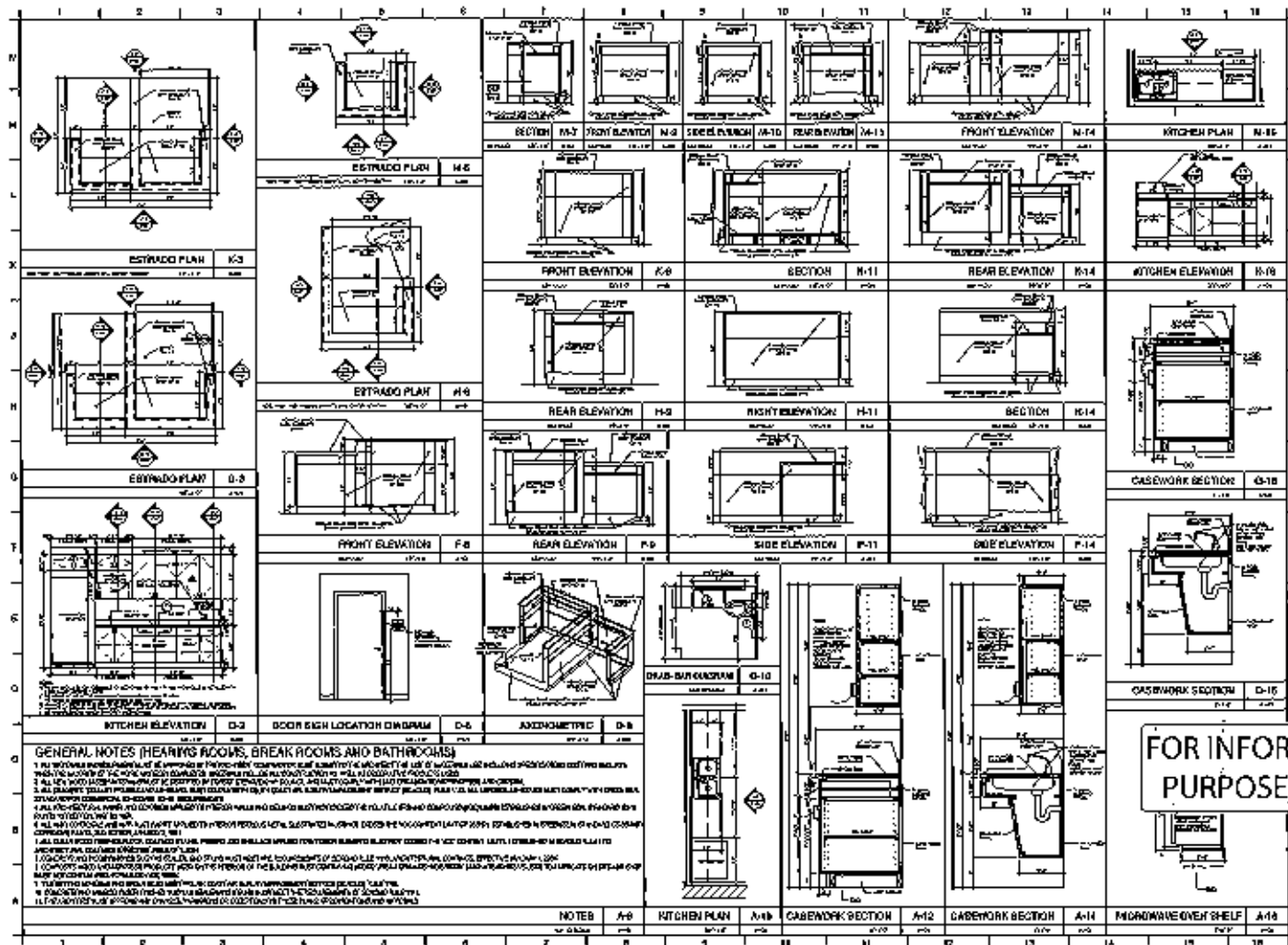
**SECTION DETAILS**

1	2	3	4	5	6	7	8	9	10	11	12	13	14	15	16
---	---	---	---	---	---	---	---	---	----	----	----	----	----	----	----

**CEILING AREA A-15**







**NOTES**

1. ALL DIMENSIONS ARE IN METERS UNLESS OTHERWISE SPECIFIED.
2. ALL DIMENSIONS ARE TO FACE UNLESS OTHERWISE SPECIFIED.
3. ALL DIMENSIONS ARE TO CENTER UNLESS OTHERWISE SPECIFIED.
4. ALL DIMENSIONS ARE TO CENTER UNLESS OTHERWISE SPECIFIED.
5. ALL DIMENSIONS ARE TO CENTER UNLESS OTHERWISE SPECIFIED.
6. ALL DIMENSIONS ARE TO CENTER UNLESS OTHERWISE SPECIFIED.
7. ALL DIMENSIONS ARE TO CENTER UNLESS OTHERWISE SPECIFIED.
8. ALL DIMENSIONS ARE TO CENTER UNLESS OTHERWISE SPECIFIED.
9. ALL DIMENSIONS ARE TO CENTER UNLESS OTHERWISE SPECIFIED.
10. ALL DIMENSIONS ARE TO CENTER UNLESS OTHERWISE SPECIFIED.
11. ALL DIMENSIONS ARE TO CENTER UNLESS OTHERWISE SPECIFIED.
12. ALL DIMENSIONS ARE TO CENTER UNLESS OTHERWISE SPECIFIED.
13. ALL DIMENSIONS ARE TO CENTER UNLESS OTHERWISE SPECIFIED.
14. ALL DIMENSIONS ARE TO CENTER UNLESS OTHERWISE SPECIFIED.
15. ALL DIMENSIONS ARE TO CENTER UNLESS OTHERWISE SPECIFIED.
16. ALL DIMENSIONS ARE TO CENTER UNLESS OTHERWISE SPECIFIED.
17. ALL DIMENSIONS ARE TO CENTER UNLESS OTHERWISE SPECIFIED.
18. ALL DIMENSIONS ARE TO CENTER UNLESS OTHERWISE SPECIFIED.
19. ALL DIMENSIONS ARE TO CENTER UNLESS OTHERWISE SPECIFIED.
20. ALL DIMENSIONS ARE TO CENTER UNLESS OTHERWISE SPECIFIED.

**BACK OFFICES**  
2nd FLOOR, 11200  
KITCHEN, 11200  
KITCHEN, 11200  
KITCHEN, 11200

**FOR INFORMATION PURPOSES ONLY**

**GENERAL NOTES (KITCHENS, BREAK ROOMS AND BATHROOMS)**

1. ALL DIMENSIONS ARE TO FACE UNLESS OTHERWISE SPECIFIED.
2. ALL DIMENSIONS ARE TO FACE UNLESS OTHERWISE SPECIFIED.
3. ALL DIMENSIONS ARE TO FACE UNLESS OTHERWISE SPECIFIED.
4. ALL DIMENSIONS ARE TO FACE UNLESS OTHERWISE SPECIFIED.
5. ALL DIMENSIONS ARE TO FACE UNLESS OTHERWISE SPECIFIED.
6. ALL DIMENSIONS ARE TO FACE UNLESS OTHERWISE SPECIFIED.
7. ALL DIMENSIONS ARE TO FACE UNLESS OTHERWISE SPECIFIED.
8. ALL DIMENSIONS ARE TO FACE UNLESS OTHERWISE SPECIFIED.
9. ALL DIMENSIONS ARE TO FACE UNLESS OTHERWISE SPECIFIED.
10. ALL DIMENSIONS ARE TO FACE UNLESS OTHERWISE SPECIFIED.
11. ALL DIMENSIONS ARE TO FACE UNLESS OTHERWISE SPECIFIED.
12. ALL DIMENSIONS ARE TO FACE UNLESS OTHERWISE SPECIFIED.
13. ALL DIMENSIONS ARE TO FACE UNLESS OTHERWISE SPECIFIED.
14. ALL DIMENSIONS ARE TO FACE UNLESS OTHERWISE SPECIFIED.
15. ALL DIMENSIONS ARE TO FACE UNLESS OTHERWISE SPECIFIED.
16. ALL DIMENSIONS ARE TO FACE UNLESS OTHERWISE SPECIFIED.
17. ALL DIMENSIONS ARE TO FACE UNLESS OTHERWISE SPECIFIED.
18. ALL DIMENSIONS ARE TO FACE UNLESS OTHERWISE SPECIFIED.
19. ALL DIMENSIONS ARE TO FACE UNLESS OTHERWISE SPECIFIED.
20. ALL DIMENSIONS ARE TO FACE UNLESS OTHERWISE SPECIFIED.

**ROOM FINISH SCHEDULE**

NO.	DESCRIPTION	UNIT	QTY	UNIT PRICE	TOTAL PRICE
1	CEILING				
2	FLOOR				
3	WALL				
4	DOOR				
5	WINDOW				
6	PAINT				
7	GLASS				
8	IRONING BOARD				
9	W.C. FITTINGS				
10	W.C. FITTINGS				
11	W.C. FITTINGS				
12	W.C. FITTINGS				
13	W.C. FITTINGS				
14	W.C. FITTINGS				
15	W.C. FITTINGS				
16	W.C. FITTINGS				
17	W.C. FITTINGS				
18	W.C. FITTINGS				
19	W.C. FITTINGS				
20	W.C. FITTINGS				
21	W.C. FITTINGS				
22	W.C. FITTINGS				
23	W.C. FITTINGS				
24	W.C. FITTINGS				
25	W.C. FITTINGS				
26	W.C. FITTINGS				
27	W.C. FITTINGS				
28	W.C. FITTINGS				
29	W.C. FITTINGS				
30	W.C. FITTINGS				
31	W.C. FITTINGS				
32	W.C. FITTINGS				
33	W.C. FITTINGS				
34	W.C. FITTINGS				
35	W.C. FITTINGS				
36	W.C. FITTINGS				
37	W.C. FITTINGS				
38	W.C. FITTINGS				
39	W.C. FITTINGS				
40	W.C. FITTINGS				
41	W.C. FITTINGS				
42	W.C. FITTINGS				
43	W.C. FITTINGS				
44	W.C. FITTINGS				
45	W.C. FITTINGS				
46	W.C. FITTINGS				
47	W.C. FITTINGS				
48	W.C. FITTINGS				
49	W.C. FITTINGS				
50	W.C. FITTINGS				
51	W.C. FITTINGS				
52	W.C. FITTINGS				
53	W.C. FITTINGS				
54	W.C. FITTINGS				
55	W.C. FITTINGS				
56	W.C. FITTINGS				
57	W.C. FITTINGS				
58	W.C. FITTINGS				
59	W.C. FITTINGS				
60	W.C. FITTINGS				
61	W.C. FITTINGS				
62	W.C. FITTINGS				
63	W.C. FITTINGS				
64	W.C. FITTINGS				
65	W.C. FITTINGS				
66	W.C. FITTINGS				
67	W.C. FITTINGS				
68	W.C. FITTINGS				
69	W.C. FITTINGS				
70	W.C. FITTINGS				
71	W.C. FITTINGS				
72	W.C. FITTINGS				
73	W.C. FITTINGS				
74	W.C. FITTINGS				
75	W.C. FITTINGS				
76	W.C. FITTINGS				
77	W.C. FITTINGS				
78	W.C. FITTINGS				
79	W.C. FITTINGS				
80	W.C. FITTINGS				
81	W.C. FITTINGS				
82	W.C. FITTINGS				
83	W.C. FITTINGS				
84	W.C. FITTINGS				
85	W.C. FITTINGS				
86	W.C. FITTINGS				
87	W.C. FITTINGS				
88	W.C. FITTINGS				
89	W.C. FITTINGS				
90	W.C. FITTINGS				
91	W.C. FITTINGS				
92	W.C. FITTINGS				
93	W.C. FITTINGS				
94	W.C. FITTINGS				
95	W.C. FITTINGS				
96	W.C. FITTINGS				
97	W.C. FITTINGS				
98	W.C. FITTINGS				
99	W.C. FITTINGS				
100	W.C. FITTINGS				

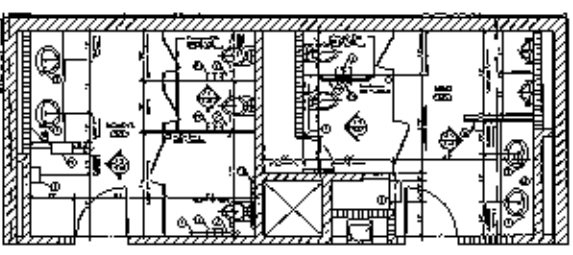
**GENERAL PROJECT SPECIFICATIONS**

**GENERAL PROJECT SPECIFICATIONS**

**GENERAL PROJECT SPECIFICATIONS & NOTES**

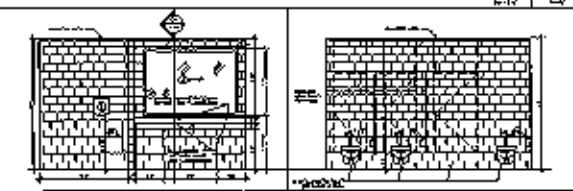
**TOILET ROOM ACCESSORIES (BOPHIX OR EQUIV)**

**SCHEDULE D-10**



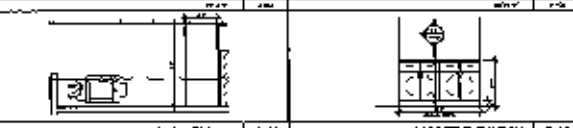
**FOR INFORMATION PURPOSES ONLY**

**FLOOR PLAN BATHROOM**



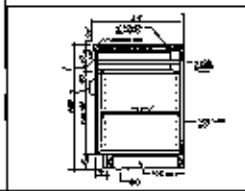
**ELEVATION F-13**

**ELEVATION F-14**

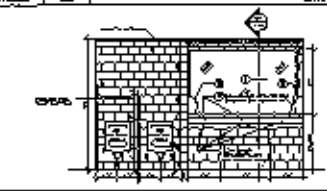


**CABINET PLAN D-13**

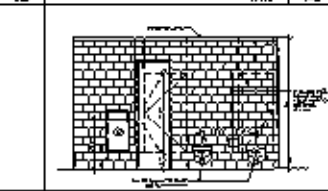
**CABINET ELEVATION D-14**



**CABINETWORK SECTION A-B**



**ELEVATION A-13**



**ELEVATION A-14**

**FINISH SPECIFICATIONS**

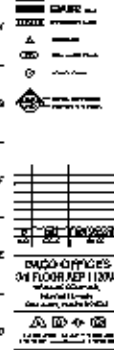
NO.	DESCRIPTION	UNIT	QTY	UNIT PRICE	TOTAL PRICE
1	CEILING				
2	FLOOR				
3	WALL				
4	DOOR				
5	WINDOW				
6	PAINT				
7	GLASS				
8	IRONING BOARD				
9	W.C. FITTINGS				
10	W.C. FITTINGS				
11	W.C. FITTINGS				
12	W.C. FITTINGS				
13	W.C. FITTINGS				
14	W.C. FITTINGS				
15	W.C. FITTINGS				
16	W.C. FITTINGS				
17	W.C. FITTINGS				
18	W.C. FITTINGS				
19	W.C. FITTINGS				
20	W.C. FITTINGS				
21	W.C. FITTINGS				
22	W.C. FITTINGS				
23	W.C. FITTINGS				
24	W.C. FITTINGS				
25	W.C. FITTINGS				
26	W.C. FITTINGS				
27	W.C. FITTINGS				
28	W.C. FITTINGS				
29	W.C. FITTINGS				
30	W.C. FITTINGS				
31	W.C. FITTINGS				
32	W.C. FITTINGS				
33	W.C. FITTINGS				
34	W.C. FITTINGS				
35	W.C. FITTINGS				
36	W.C. FITTINGS				
37	W.C. FITTINGS				
38	W.C. FITTINGS				
39	W.C. FITTINGS				
40	W.C. FITTINGS				
41	W.C. FITTINGS				
42	W.C. FITTINGS				
43	W.C. FITTINGS				
44	W.C. FITTINGS				
45	W.C. FITTINGS				
46	W.C. FITTINGS				
47	W.C. FITTINGS				
48	W.C. FITTINGS				
49	W.C. FITTINGS				
50	W.C. FITTINGS				
51	W.C. FITTINGS				
52	W.C. FITTINGS				
53	W.C. FITTINGS				
54	W.C. FITTINGS				
55	W.C. FITTINGS				
56	W.C. FITTINGS				
57	W.C. FITTINGS				
58	W.C. FITTINGS				
59	W.C. FITTINGS				
60	W.C. FITTINGS				
61	W.C. FITTINGS				
62	W.C. FITTINGS				
63	W.C. FITTINGS				
64	W.C. FITTINGS				
65	W.C. FITTINGS				
66	W.C. FITTINGS				
67	W.C. FITTINGS				
68	W.C. FITTINGS				
69	W.C. FITTINGS				
70	W.C. FITTINGS				
71	W.C. FITTINGS				
72	W.C. FITTINGS				
73	W.C. FITTINGS				
74	W.C. FITTINGS				
75	W.C. FITTINGS				
76	W.C. FITTINGS				
77	W.C. FITTINGS				
78	W.C. FITTINGS				
79	W.C. FITTINGS				
80	W.C. FITTINGS				
81	W.C. FITTINGS				
82	W.C. FITTINGS				
83	W.C. FITTINGS				
84	W.C. FITTINGS				
85	W.C. FITTINGS				
86	W.C. FITTINGS				
87	W.C. FITTINGS				
88	W.C. FITTINGS				
89	W.C. FITTINGS				
90	W.C. FITTINGS				
91	W.C. FITTINGS				
92	W.C. FITTINGS				
93	W.C. FITTINGS				
94	W.C. FITTINGS				
95	W.C. FITTINGS				
96	W.C. FITTINGS				
97	W.C. FITTINGS				
98	W.C. FITTINGS				
99	W.C. FITTINGS				
100	W.C. FITTINGS				

**SCHEDULE & NOTES A-B**

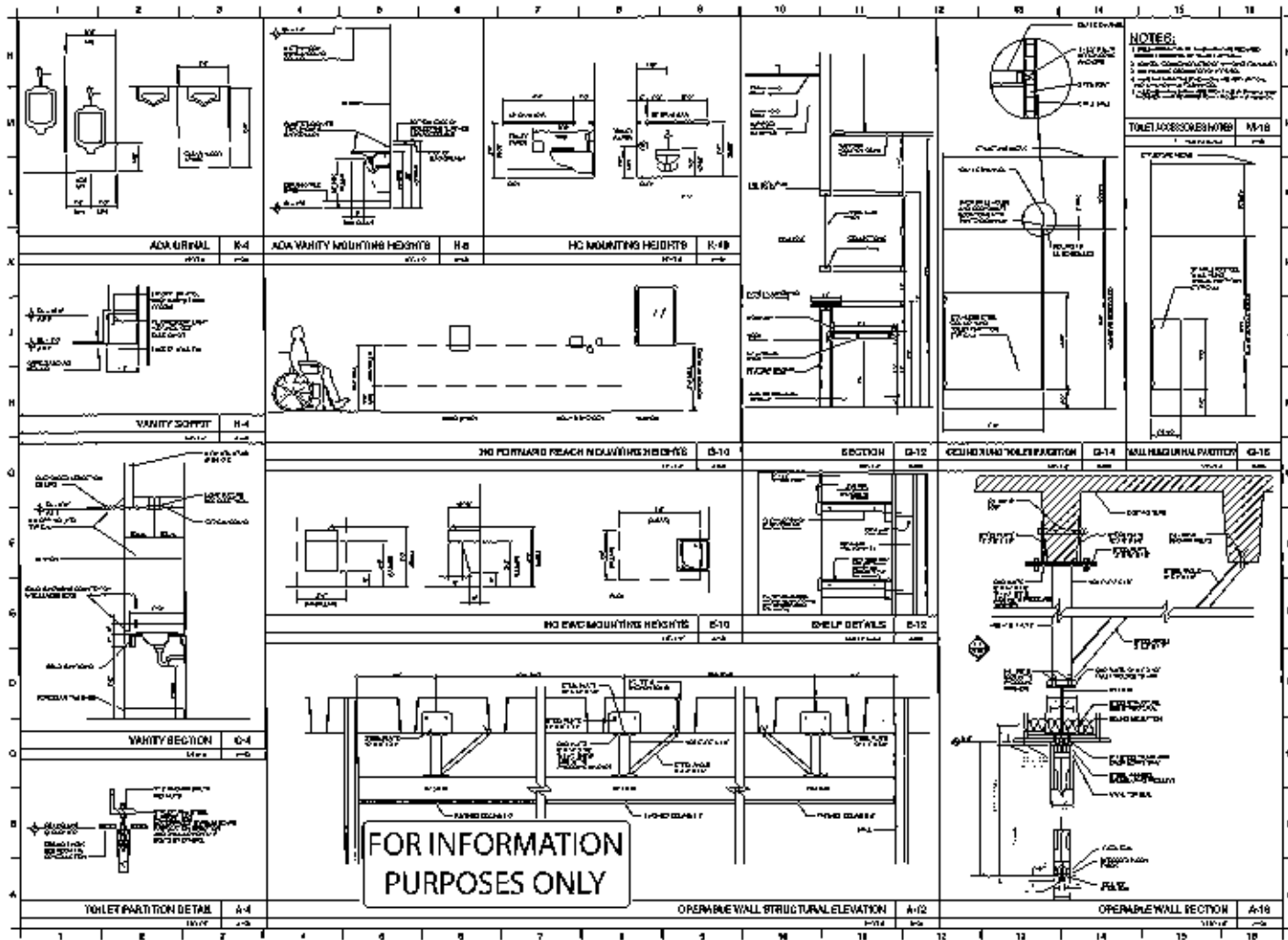
**NOTES:**

- 1. All work to be in accordance with the specifications and drawings.
- 2. All materials to be of the highest quality and approved by the Engineer.
- 3. All work to be completed within the specified time frame.
- 4. All work to be done in accordance with the latest edition of the Building Code of the City of Johannesburg.
- 5. All work to be done in accordance with the latest edition of the National Building Regulations and Building Standards Act, 1977.
- 6. All work to be done in accordance with the latest edition of the Occupational Safety and Health Act, 1993.
- 7. All work to be done in accordance with the latest edition of the Environmental Health Act, 1986.
- 8. All work to be done in accordance with the latest edition of the Water Act, 1956.
- 9. All work to be done in accordance with the latest edition of the Electricity Act, 1987.
- 10. All work to be done in accordance with the latest edition of the National Environmental Management Act, 1989.
- 11. All work to be done in accordance with the latest edition of the National Water Act, 1998.
- 12. All work to be done in accordance with the latest edition of the National Energy Act, 2008.
- 13. All work to be done in accordance with the latest edition of the National Environmental Management: Air Quality Act, 2004.
- 14. All work to be done in accordance with the latest edition of the National Environmental Management: Noise and Vibration Act, 2008.
- 15. All work to be done in accordance with the latest edition of the National Environmental Management: Waste Management Act, 2008.
- 16. All work to be done in accordance with the latest edition of the National Environmental Management: Waste Management: Regulations, 2008.
- 17. All work to be done in accordance with the latest edition of the National Environmental Management: Waste Management: Regulations, 2008.
- 18. All work to be done in accordance with the latest edition of the National Environmental Management: Waste Management: Regulations, 2008.
- 19. All work to be done in accordance with the latest edition of the National Environmental Management: Waste Management: Regulations, 2008.
- 20. All work to be done in accordance with the latest edition of the National Environmental Management: Waste Management: Regulations, 2008.

**LEGEND:**



**DATE:** 10/10/2011  
**BY:** [Signature]  
**SCALE:** 1:10  
**PROJECT:** [Project Name]  
**CLIENT:** [Client Name]  
**ADDRESS:** [Address]  
**PHONE:** [Phone Number]  
**FAX:** [Fax Number]  
**EMAIL:** [Email Address]  
**WEBSITE:** [Website]



FOR INFORMATION PURPOSES ONLY

**NOTES:**

1. All dimensions are in inches unless otherwise noted.
2. All dimensions are to the center of the component unless otherwise noted.
3. All dimensions are to the finished surface unless otherwise noted.
4. All dimensions are to the center of the component unless otherwise noted.
5. All dimensions are to the finished surface unless otherwise noted.

TITLE	DATE	BY	CHKD
TOILET ACCESSORIES	M-18		
OPERABLE WALL			

NO.	REV.	DATE	BY	CHKD
1				
2				
3				
4				
5				
6				
7				
8				
9				
10				
11				
12				
13				
14				
15				
16				
17				
18				

**NOTES**

1. All dimensions are in inches unless otherwise noted.

2. All dimensions are to the center of the component unless otherwise noted.

3. All dimensions are to the finished surface unless otherwise noted.

4. All dimensions are to the center of the component unless otherwise noted.

5. All dimensions are to the finished surface unless otherwise noted.



**NOTES:**  
 1. ALL WORK SHALL BE IN ACCORDANCE WITH THE LATEST EDITIONS OF THE MECHANICAL AND PLUMBING CODES AND ALL CITY ORDINANCES.  
 2. ALL WORK SHALL BE IN ACCORDANCE WITH THE LATEST EDITIONS OF THE MECHANICAL AND PLUMBING CODES AND ALL CITY ORDINANCES.  
 3. ALL WORK SHALL BE IN ACCORDANCE WITH THE LATEST EDITIONS OF THE MECHANICAL AND PLUMBING CODES AND ALL CITY ORDINANCES.  
 4. ALL WORK SHALL BE IN ACCORDANCE WITH THE LATEST EDITIONS OF THE MECHANICAL AND PLUMBING CODES AND ALL CITY ORDINANCES.

LEVEL NO.

1	2	3	4	5	6	7	8	9	10	11	12	13	14	15	16	17
---	---	---	---	---	---	---	---	---	----	----	----	----	----	----	----	----

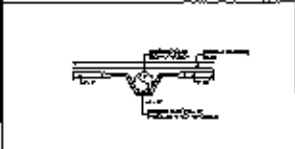
**OWNER:**  
**2nd FLOOR MEP (118)W**  
 118 W. ...  
 ...  
 ...



**PROJECT:**  
 Third Floor Plan, Prop.  
 Air-Cond. and Vent. Layout  
 ...  
 ...

**M-101**

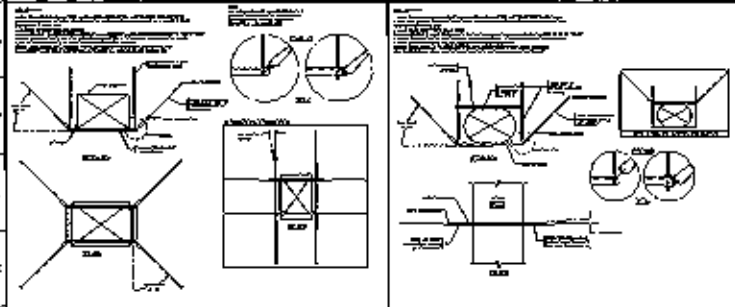
FOR INFORMATION  
 PURPOSES ONLY



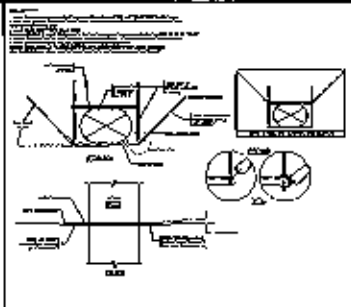
EXHAUST DUCT TRANSITION DETAIL 2

THIRD FLOOR PLAN PROPOSED AIR CONDITIONING AND VENTILATION LAYOUT 1

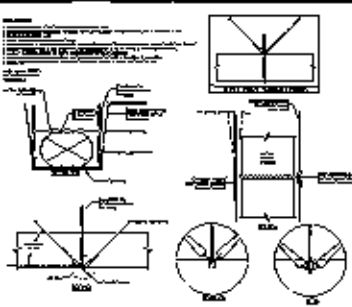




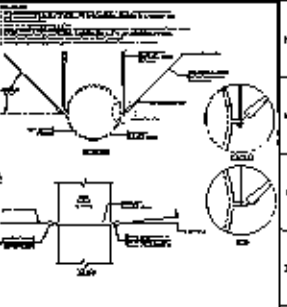
RECTANGULAR UNITS OF EQUIPMENT / 4-WAY



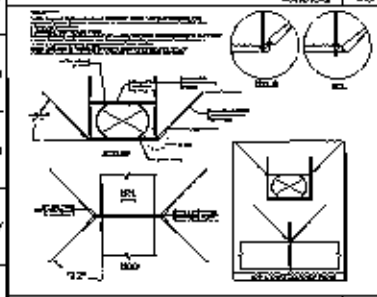
FLAT OR OVAL DUCTWORK / TRANSVERSE



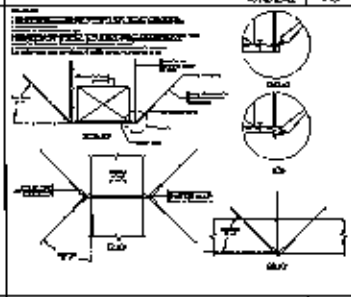
FLAT OR OVAL DUCTWORK / LONGITUDINAL



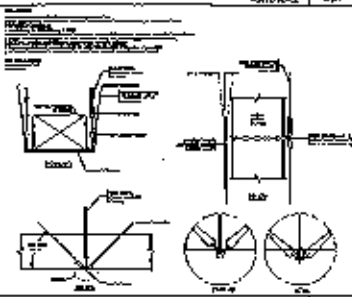
ROUND DUCTWORK / TRANSVERSE



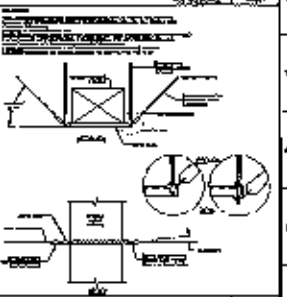
FLAT OR OVAL DUCTWORK / 4-WAY



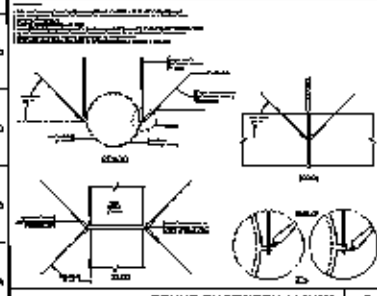
RECTANGULAR DUCTWORK / 4-WAY



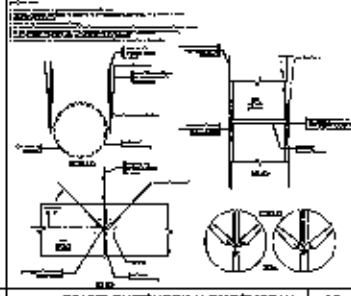
RECTANGULAR DUCTWORK / LONGITUDINAL



RECT. DUCTWORK / TRANSVERSE



ROUND DUCTWORK / 4-WAY



ROUND DUCTWORK / LONGITUDINAL

FOR INFORMATION PURPOSES ONLY

LEGEND:

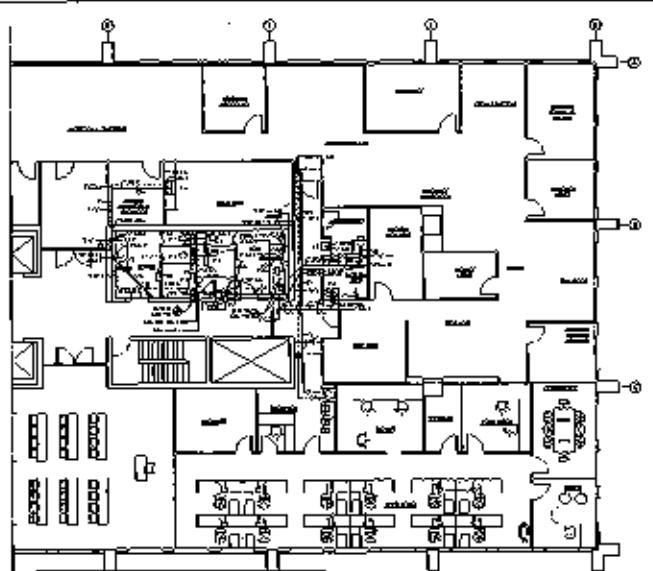
10	1/2"	1/2"
11	3/4"	3/4"
12	1"	1"
13	1 1/4"	1 1/4"
14	1 1/2"	1 1/2"
15	2"	2"
16	2 1/2"	2 1/2"
17	3"	3"
18	3 1/2"	3 1/2"
19	4"	4"
20	4 1/2"	4 1/2"
21	5"	5"
22	5 1/2"	5 1/2"
23	6"	6"
24	6 1/2"	6 1/2"
25	7"	7"
26	7 1/2"	7 1/2"
27	8"	8"
28	8 1/2"	8 1/2"
29	9"	9"
30	9 1/2"	9 1/2"
31	10"	10"
32	10 1/2"	10 1/2"
33	11"	11"
34	11 1/2"	11 1/2"
35	12"	12"
36	12 1/2"	12 1/2"
37	13"	13"
38	13 1/2"	13 1/2"
39	14"	14"
40	14 1/2"	14 1/2"
41	15"	15"
42	15 1/2"	15 1/2"
43	16"	16"
44	16 1/2"	16 1/2"
45	17"	17"
46	17 1/2"	17 1/2"
47	18"	18"
48	18 1/2"	18 1/2"
49	19"	19"
50	19 1/2"	19 1/2"
51	20"	20"
52	20 1/2"	20 1/2"
53	21"	21"
54	21 1/2"	21 1/2"
55	22"	22"
56	22 1/2"	22 1/2"
57	23"	23"
58	23 1/2"	23 1/2"
59	24"	24"
60	24 1/2"	24 1/2"
61	25"	25"
62	25 1/2"	25 1/2"
63	26"	26"
64	26 1/2"	26 1/2"
65	27"	27"
66	27 1/2"	27 1/2"
67	28"	28"
68	28 1/2"	28 1/2"
69	29"	29"
70	29 1/2"	29 1/2"
71	30"	30"
72	30 1/2"	30 1/2"
73	31"	31"
74	31 1/2"	31 1/2"
75	32"	32"
76	32 1/2"	32 1/2"
77	33"	33"
78	33 1/2"	33 1/2"
79	34"	34"
80	34 1/2"	34 1/2"
81	35"	35"
82	35 1/2"	35 1/2"
83	36"	36"
84	36 1/2"	36 1/2"
85	37"	37"
86	37 1/2"	37 1/2"
87	38"	38"
88	38 1/2"	38 1/2"
89	39"	39"
90	39 1/2"	39 1/2"
91	40"	40"
92	40 1/2"	40 1/2"
93	41"	41"
94	41 1/2"	41 1/2"
95	42"	42"
96	42 1/2"	42 1/2"
97	43"	43"
98	43 1/2"	43 1/2"
99	44"	44"
100	44 1/2"	44 1/2"

INDUSTRIAL SUPPLY COMPANY  
 10000 W. 10th Avenue  
 Denver, Colorado 80202  
 (303) 751-1000  
 A B C

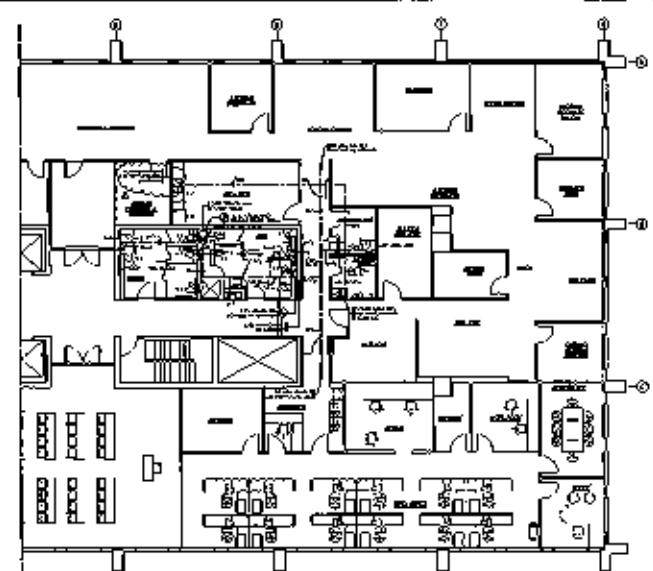
Ductwork Support Details  
 M-201





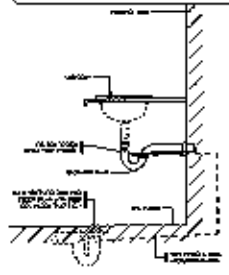


THIRD FLOOR PLAN SANITARY LAYOUT 2  
SCALE: 1/8" = 1'-0"

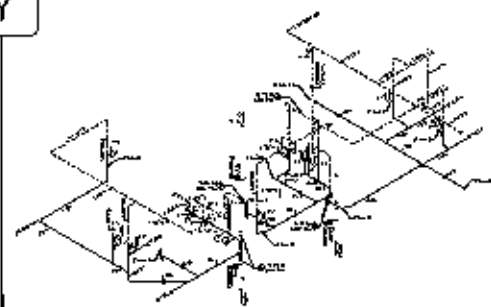


THIRD FLOOR PLAN VALVE & DISTRIBUTION LAYOUT 1  
SCALE: 1/8" = 1'-0"

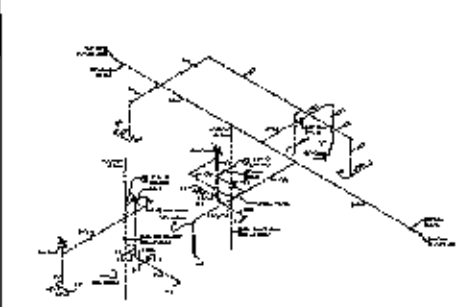
FOR INFORMATION PURPOSES ONLY



LAVATORY TRAP PRIMER DETAIL 6  
SCALE: 1/4" = 1'-0"



SANITARY RISER DETAIL 4  
SCALE: 1/4" = 1'-0"



WATER MAIN RISER DETAIL 3  
SCALE: 1/4" = 1'-0"

NOTED:

10	SEE	PLAN
11	SEE	PLAN
12	SEE	PLAN

BACH OFFICE  
 2ND FLOOR APT 1120W  
 1000 W. 10TH ST.  
 DENVER, CO 80202  
 TEL: 303.733.1100  
 FAX: 303.733.1101  
 WWW.BACHOFFICE.COM

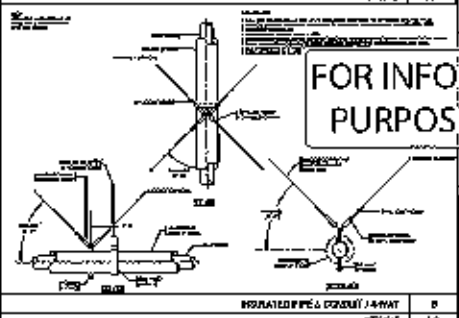
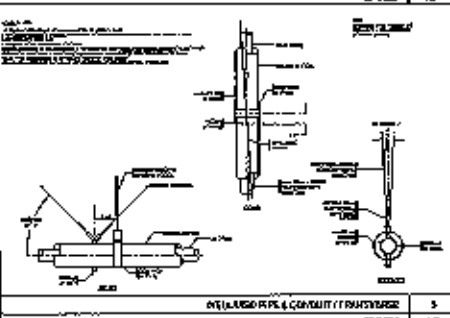
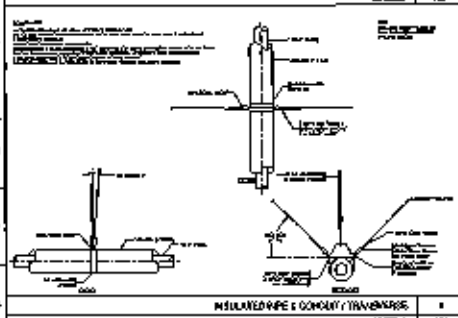
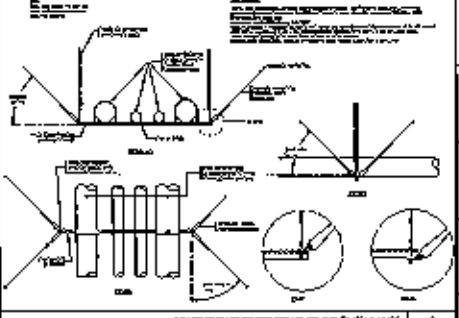
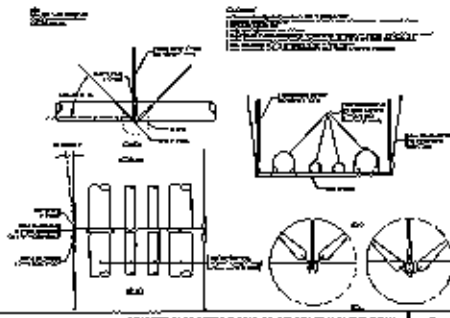
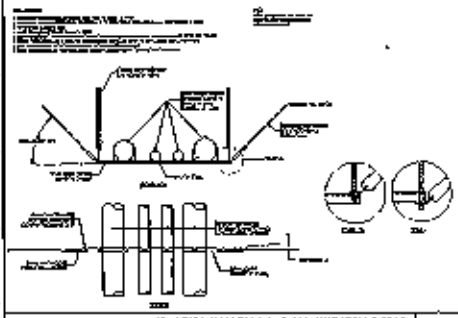
JAMES M. SMITH  
 LICENSE NO. 10000  
 STATE OF COLORADO  
 PROFESSIONAL ENGINEER

THIRD FLOOR PLAN  
 Plumbing Level

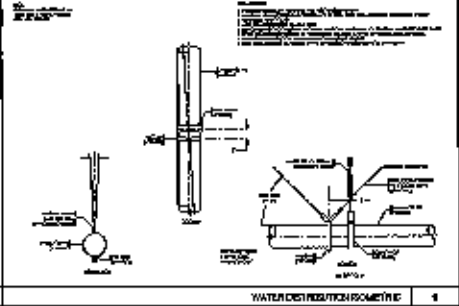
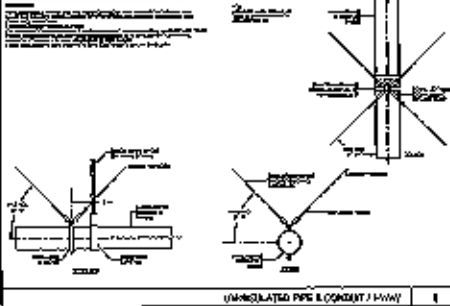
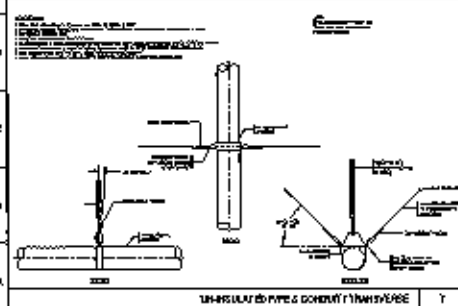
DATE	12/15/11
BY	JMS
CHECKED	JMS
DATE	12/15/11

P-100





FOR INFORMATION PURPOSES ONLY




SAUDI OFFICE  
14 FLOOR MEP TOWER  
DUBAI - U.A.E.  
P.O. BOX 127070  
DUBAI - U.A.E.  
AD + G  
LONDON  
LONDON  
LONDON

SAUDI OFFICE  
14 FLOOR MEP TOWER  
DUBAI - U.A.E.  
P.O. BOX 127070  
DUBAI - U.A.E.  
AD + G  
LONDON  
LONDON  
LONDON

PLUMBING FIXTURE SCHEDULE

No.	Description	Type		Material		Finish		Installation		Remarks	
		Symbol	Code	Material	Finish	Installation	Remarks	Material	Finish	Installation	Remarks
1	Water Closet	WC	1	1/2" x 12"	White	Standard	Standard	Standard	Standard	Standard	Standard
2	Water Closet	WC	2	1/2" x 12"	White	Standard	Standard	Standard	Standard	Standard	Standard
3	Water Closet	WC	3	1/2" x 12"	White	Standard	Standard	Standard	Standard	Standard	Standard
4	Water Closet	WC	4	1/2" x 12"	White	Standard	Standard	Standard	Standard	Standard	Standard
5	Water Closet	WC	5	1/2" x 12"	White	Standard	Standard	Standard	Standard	Standard	Standard
6	Water Closet	WC	6	1/2" x 12"	White	Standard	Standard	Standard	Standard	Standard	Standard
7	Water Closet	WC	7	1/2" x 12"	White	Standard	Standard	Standard	Standard	Standard	Standard
8	Water Closet	WC	8	1/2" x 12"	White	Standard	Standard	Standard	Standard	Standard	Standard
9	Water Closet	WC	9	1/2" x 12"	White	Standard	Standard	Standard	Standard	Standard	Standard
10	Water Closet	WC	10	1/2" x 12"	White	Standard	Standard	Standard	Standard	Standard	Standard

**PIPING SPECIFICATIONS:**

SIZE	TYPE	WALL THICKNESS	TEMPERATURE	PRESSURE	TEST PRESSURE	INSULATION	PAINT	NOTES
1/2"	CPVC	0.090	100°F	100 PSI	150 PSI	None	White	
3/4"	CPVC	0.110	100°F	100 PSI	150 PSI	None	White	
1"	CPVC	0.133	100°F	100 PSI	150 PSI	None	White	
1 1/2"	CPVC	0.164	100°F	100 PSI	150 PSI	None	White	
2"	CPVC	0.191	100°F	100 PSI	150 PSI	None	White	
2 1/2"	CPVC	0.224	100°F	100 PSI	150 PSI	None	White	
3"	CPVC	0.250	100°F	100 PSI	150 PSI	None	White	
3 1/2"	CPVC	0.281	100°F	100 PSI	150 PSI	None	White	
4"	CPVC	0.307	100°F	100 PSI	150 PSI	None	White	
4 1/2"	CPVC	0.338	100°F	100 PSI	150 PSI	None	White	
5"	CPVC	0.364	100°F	100 PSI	150 PSI	None	White	
5 1/2"	CPVC	0.395	100°F	100 PSI	150 PSI	None	White	
6"	CPVC	0.421	100°F	100 PSI	150 PSI	None	White	
6 1/2"	CPVC	0.452	100°F	100 PSI	150 PSI	None	White	
7"	CPVC	0.478	100°F	100 PSI	150 PSI	None	White	
7 1/2"	CPVC	0.509	100°F	100 PSI	150 PSI	None	White	
8"	CPVC	0.535	100°F	100 PSI	150 PSI	None	White	
8 1/2"	CPVC	0.566	100°F	100 PSI	150 PSI	None	White	
9"	CPVC	0.592	100°F	100 PSI	150 PSI	None	White	
9 1/2"	CPVC	0.623	100°F	100 PSI	150 PSI	None	White	
10"	CPVC	0.649	100°F	100 PSI	150 PSI	None	White	
10 1/2"	CPVC	0.680	100°F	100 PSI	150 PSI	None	White	
11"	CPVC	0.706	100°F	100 PSI	150 PSI	None	White	
11 1/2"	CPVC	0.737	100°F	100 PSI	150 PSI	None	White	
12"	CPVC	0.763	100°F	100 PSI	150 PSI	None	White	
12 1/2"	CPVC	0.794	100°F	100 PSI	150 PSI	None	White	
13"	CPVC	0.820	100°F	100 PSI	150 PSI	None	White	
13 1/2"	CPVC	0.851	100°F	100 PSI	150 PSI	None	White	
14"	CPVC	0.877	100°F	100 PSI	150 PSI	None	White	
14 1/2"	CPVC	0.908	100°F	100 PSI	150 PSI	None	White	
15"	CPVC	0.934	100°F	100 PSI	150 PSI	None	White	
15 1/2"	CPVC	0.965	100°F	100 PSI	150 PSI	None	White	
16"	CPVC	0.991	100°F	100 PSI	150 PSI	None	White	
16 1/2"	CPVC	1.022	100°F	100 PSI	150 PSI	None	White	
17"	CPVC	1.048	100°F	100 PSI	150 PSI	None	White	
17 1/2"	CPVC	1.079	100°F	100 PSI	150 PSI	None	White	
18"	CPVC	1.105	100°F	100 PSI	150 PSI	None	White	
18 1/2"	CPVC	1.136	100°F	100 PSI	150 PSI	None	White	
19"	CPVC	1.162	100°F	100 PSI	150 PSI	None	White	
19 1/2"	CPVC	1.193	100°F	100 PSI	150 PSI	None	White	
20"	CPVC	1.219	100°F	100 PSI	150 PSI	None	White	
20 1/2"	CPVC	1.250	100°F	100 PSI	150 PSI	None	White	
21"	CPVC	1.276	100°F	100 PSI	150 PSI	None	White	
21 1/2"	CPVC	1.307	100°F	100 PSI	150 PSI	None	White	
22"	CPVC	1.333	100°F	100 PSI	150 PSI	None	White	
22 1/2"	CPVC	1.364	100°F	100 PSI	150 PSI	None	White	
23"	CPVC	1.390	100°F	100 PSI	150 PSI	None	White	
23 1/2"	CPVC	1.421	100°F	100 PSI	150 PSI	None	White	
24"	CPVC	1.447	100°F	100 PSI	150 PSI	None	White	
24 1/2"	CPVC	1.478	100°F	100 PSI	150 PSI	None	White	
25"	CPVC	1.504	100°F	100 PSI	150 PSI	None	White	
25 1/2"	CPVC	1.535	100°F	100 PSI	150 PSI	None	White	
26"	CPVC	1.561	100°F	100 PSI	150 PSI	None	White	
26 1/2"	CPVC	1.592	100°F	100 PSI	150 PSI	None	White	
27"	CPVC	1.618	100°F	100 PSI	150 PSI	None	White	
27 1/2"	CPVC	1.649	100°F	100 PSI	150 PSI	None	White	
28"	CPVC	1.675	100°F	100 PSI	150 PSI	None	White	
28 1/2"	CPVC	1.706	100°F	100 PSI	150 PSI	None	White	
29"	CPVC	1.732	100°F	100 PSI	150 PSI	None	White	
29 1/2"	CPVC	1.763	100°F	100 PSI	150 PSI	None	White	
30"	CPVC	1.789	100°F	100 PSI	150 PSI	None	White	
30 1/2"	CPVC	1.820	100°F	100 PSI	150 PSI	None	White	
31"	CPVC	1.846	100°F	100 PSI	150 PSI	None	White	
31 1/2"	CPVC	1.877	100°F	100 PSI	150 PSI	None	White	
32"	CPVC	1.903	100°F	100 PSI	150 PSI	None	White	
32 1/2"	CPVC	1.934	100°F	100 PSI	150 PSI	None	White	
33"	CPVC	1.960	100°F	100 PSI	150 PSI	None	White	
33 1/2"	CPVC	1.991	100°F	100 PSI	150 PSI	None	White	
34"	CPVC	2.017	100°F	100 PSI	150 PSI	None	White	
34 1/2"	CPVC	2.048	100°F	100 PSI	150 PSI	None	White	
35"	CPVC	2.074	100°F	100 PSI	150 PSI	None	White	
35 1/2"	CPVC	2.105	100°F	100 PSI	150 PSI	None	White	
36"	CPVC	2.131	100°F	100 PSI	150 PSI	None	White	
36 1/2"	CPVC	2.162	100°F	100 PSI	150 PSI	None	White	
37"	CPVC	2.188	100°F	100 PSI	150 PSI	None	White	
37 1/2"	CPVC	2.219	100°F	100 PSI	150 PSI	None	White	
38"	CPVC	2.245	100°F	100 PSI	150 PSI	None	White	
38 1/2"	CPVC	2.276	100°F	100 PSI	150 PSI	None	White	
39"	CPVC	2.302	100°F	100 PSI	150 PSI	None	White	
39 1/2"	CPVC	2.333	100°F	100 PSI	150 PSI	None	White	
40"	CPVC	2.359	100°F	100 PSI	150 PSI	None	White	
40 1/2"	CPVC	2.390	100°F	100 PSI	150 PSI	None	White	
41"	CPVC	2.416	100°F	100 PSI	150 PSI	None	White	
41 1/2"	CPVC	2.447	100°F	100 PSI	150 PSI	None	White	
42"	CPVC	2.473	100°F	100 PSI	150 PSI	None	White	
42 1/2"	CPVC	2.504	100°F	100 PSI	150 PSI	None	White	
43"	CPVC	2.530	100°F	100 PSI	150 PSI	None	White	
43 1/2"	CPVC	2.561	100°F	100 PSI	150 PSI	None	White	
44"	CPVC	2.587	100°F	100 PSI	150 PSI	None	White	
44 1/2"	CPVC	2.618	100°F	100 PSI	150 PSI	None	White	
45"	CPVC	2.644	100°F	100 PSI	150 PSI	None	White	
45 1/2"	CPVC	2.675	100°F	100 PSI	150 PSI	None	White	
46"	CPVC	2.701	100°F	100 PSI	150 PSI	None	White	
46 1/2"	CPVC	2.732	100°F	100 PSI	150 PSI	None	White	
47"	CPVC	2.758	100°F	100 PSI	150 PSI	None	White	
47 1/2"	CPVC	2.789	100°F	100 PSI	150 PSI	None	White	
48"	CPVC	2.815	100°F	100 PSI	150 PSI	None	White	
48 1/2"	CPVC	2.846	100°F	100 PSI	150 PSI	None	White	
49"	CPVC	2.872	100°F	100 PSI	150 PSI	None	White	
49 1/2"	CPVC	2.903	100°F	100 PSI	150 PSI	None	White	
50"	CPVC	2.929	100°F	100 PSI	150 PSI	None	White	
50 1/2"	CPVC	2.960	100°F	100 PSI	150 PSI	None	White	
51"	CPVC	2.986	100°F	100 PSI	150 PSI	None	White	
51 1/2"	CPVC	3.017	100°F	100 PSI	150 PSI	None	White	
52"	CPVC	3.043	100°F	100 PSI	150 PSI	None	White	
52 1/2"	CPVC	3.074	100°F	100 PSI	150 PSI	None	White	
53"	CPVC	3.100	100°F	100 PSI	150 PSI	None	White	
53 1/2"	CPVC	3.131	100°F	100 PSI	150 PSI	None	White	
54"	CPVC	3.157	100°F	100 PSI	150 PSI	None	White	
54 1/2"	CPVC	3.188	100°F	100 PSI	150 PSI	None	White	
55"	CPVC	3.214	100°F	100 PSI	150 PSI	None	White	
55 1/2"	CPVC	3.245	100°F	100 PSI	150 PSI	None	White	
56"	CPVC	3.271	100°F	100 PSI	150 PSI	None	White	
56 1/2"	CPVC	3.302	100°F	100 PSI	150 PSI	None	White	
57"	CPVC	3.328	100°F	100 PSI	150 PSI	None	White	
57 1/2"	CPVC	3.359	100°F	100 PSI	150 PSI	None	White	
58"	CPVC	3.385	100°F	100 PSI	150 PSI	None	White	
58 1/2"	CPVC	3.416	100°F	100 PSI	150 PSI	None	White	
59"	CPVC	3.442	100°F	100 PSI	150 PSI	None	White	
59 1/2"	CPVC	3.473	100°F	100 PSI	150 PSI	None	White	
60"	CPVC	3.499	100°F	100 PSI	150 PSI	None	White	
60 1/2"	CPVC	3.530	100°F	100 PSI	150 PSI	None	White	
61"	CPVC	3.556	100°F	100 PSI	150 PSI	None	White	
61 1/2"	CPVC	3.587	100°F	100 PSI	150 PSI	None	White	
62"	CPVC	3.613	100°F	100 PSI	150 PSI	None	White	
62 1/2"	CPVC	3.644	100°F	100 PSI	150 PSI	None	White	
63"	CPVC	3.670	100°F	100 PSI	150 PSI	None	White	
63 1/2"	CPVC	3.701	100°F	100 PSI	150 PSI	None	White	
64"	CPVC	3.727	100°F	100 PSI	150 PSI	None	White	
64 1/2"	CPVC	3.758	100°F	100 PSI				





**ABBREVIATIONS**

ALUMINUM	ALUM
ASBESTOS	ASB
BRICK	BRK
CONCRETE	CON
GLASS	GLS
INSULATION	INS
IRON	IRN
STEEL	STL
WOOD	WOD
...	...

**GENERAL NOTES**

1. ALL WORK SHALL BE IN ACCORDANCE WITH THE LATEST EDITIONS OF THE BUREAU OF FIRE PREVENTION AND SAFETY ENGINEERING (BFPE) CODES AND STANDARDS.
2. THE CONTRACTOR SHALL BE RESPONSIBLE FOR OBTAINING ALL NECESSARY PERMITS AND APPROVALS FROM THE RELEVANT AUTHORITIES.
3. ALL MATERIALS AND WORKMANSHIP SHALL BE SUBJECT TO INSPECTION AND APPROVAL BY THE RELEVANT AUTHORITIES.
4. THE CONTRACTOR SHALL MAINTAIN ACCESS TO ALL SERVICES AND UTILITIES AT ALL TIMES.
5. ALL ELECTRICAL WORK SHALL BE IN ACCORDANCE WITH THE ELECTRICAL REGULATIONS (ER) AND THE ELECTRICAL WIRING REGULATIONS (EWR).
6. ALL MECHANICAL WORK SHALL BE IN ACCORDANCE WITH THE MECHANICAL REGULATIONS (MR) AND THE MECHANICAL WIRING REGULATIONS (MWR).
7. ALL PLUMBING WORK SHALL BE IN ACCORDANCE WITH THE PLUMBING REGULATIONS (PR) AND THE PLUMBING WIRING REGULATIONS (PWR).
8. ALL PAINTING AND DECORATION WORK SHALL BE IN ACCORDANCE WITH THE PAINTING AND DECORATION REGULATIONS (PDR) AND THE PAINTING AND DECORATION WIRING REGULATIONS (PDWR).
9. THE CONTRACTOR SHALL BE RESPONSIBLE FOR THE PROTECTION OF ALL EXISTING SERVICES AND UTILITIES.
10. ALL WORK SHALL BE COMPLETED WITHIN THE SPECIFIED TIME FRAME.
11. THE CONTRACTOR SHALL MAINTAIN A NEAT AND ORDERLY WORK SITE AT ALL TIMES.
12. ALL MATERIALS SHALL BE STORED PROPERLY AND PROTECTED FROM WEATHER.
13. THE CONTRACTOR SHALL BE RESPONSIBLE FOR THE DISPOSAL OF ALL WASTE MATERIALS.
14. ALL WORK SHALL BE COMPLETED TO THE SATISFACTION OF THE RELEVANT AUTHORITIES.
15. THE CONTRACTOR SHALL BE RESPONSIBLE FOR THE PROTECTION OF ALL ADJACENT PROPERTIES.
16. ALL WORK SHALL BE COMPLETED WITHIN THE SPECIFIED TIME FRAME.
17. THE CONTRACTOR SHALL MAINTAIN A NEAT AND ORDERLY WORK SITE AT ALL TIMES.
18. ALL MATERIALS SHALL BE STORED PROPERLY AND PROTECTED FROM WEATHER.
19. THE CONTRACTOR SHALL BE RESPONSIBLE FOR THE DISPOSAL OF ALL WASTE MATERIALS.
20. ALL WORK SHALL BE COMPLETED TO THE SATISFACTION OF THE RELEVANT AUTHORITIES.

**MECHANICAL NOTES**

1. ALL MECHANICAL WORK SHALL BE IN ACCORDANCE WITH THE MECHANICAL REGULATIONS (MR) AND THE MECHANICAL WIRING REGULATIONS (MWR).
2. ALL MECHANICAL WORK SHALL BE COMPLETED WITHIN THE SPECIFIED TIME FRAME.
3. THE CONTRACTOR SHALL MAINTAIN A NEAT AND ORDERLY WORK SITE AT ALL TIMES.
4. ALL MATERIALS SHALL BE STORED PROPERLY AND PROTECTED FROM WEATHER.
5. THE CONTRACTOR SHALL BE RESPONSIBLE FOR THE DISPOSAL OF ALL WASTE MATERIALS.
6. ALL WORK SHALL BE COMPLETED TO THE SATISFACTION OF THE RELEVANT AUTHORITIES.
7. THE CONTRACTOR SHALL BE RESPONSIBLE FOR THE PROTECTION OF ALL ADJACENT PROPERTIES.
8. ALL WORK SHALL BE COMPLETED WITHIN THE SPECIFIED TIME FRAME.
9. THE CONTRACTOR SHALL MAINTAIN A NEAT AND ORDERLY WORK SITE AT ALL TIMES.
10. ALL MATERIALS SHALL BE STORED PROPERLY AND PROTECTED FROM WEATHER.
11. THE CONTRACTOR SHALL BE RESPONSIBLE FOR THE DISPOSAL OF ALL WASTE MATERIALS.
12. ALL WORK SHALL BE COMPLETED TO THE SATISFACTION OF THE RELEVANT AUTHORITIES.

**ELECTRICAL NOTES**

1. ALL ELECTRICAL WORK SHALL BE IN ACCORDANCE WITH THE ELECTRICAL REGULATIONS (ER) AND THE ELECTRICAL WIRING REGULATIONS (EWR).
2. ALL ELECTRICAL WORK SHALL BE COMPLETED WITHIN THE SPECIFIED TIME FRAME.
3. THE CONTRACTOR SHALL MAINTAIN A NEAT AND ORDERLY WORK SITE AT ALL TIMES.
4. ALL MATERIALS SHALL BE STORED PROPERLY AND PROTECTED FROM WEATHER.
5. THE CONTRACTOR SHALL BE RESPONSIBLE FOR THE DISPOSAL OF ALL WASTE MATERIALS.
6. ALL WORK SHALL BE COMPLETED TO THE SATISFACTION OF THE RELEVANT AUTHORITIES.
7. THE CONTRACTOR SHALL BE RESPONSIBLE FOR THE PROTECTION OF ALL ADJACENT PROPERTIES.
8. ALL WORK SHALL BE COMPLETED WITHIN THE SPECIFIED TIME FRAME.
9. THE CONTRACTOR SHALL MAINTAIN A NEAT AND ORDERLY WORK SITE AT ALL TIMES.
10. ALL MATERIALS SHALL BE STORED PROPERLY AND PROTECTED FROM WEATHER.
11. THE CONTRACTOR SHALL BE RESPONSIBLE FOR THE DISPOSAL OF ALL WASTE MATERIALS.
12. ALL WORK SHALL BE COMPLETED TO THE SATISFACTION OF THE RELEVANT AUTHORITIES.

**PAINTING AND DECORATION NOTES**

1. ALL PAINTING AND DECORATION WORK SHALL BE IN ACCORDANCE WITH THE PAINTING AND DECORATION REGULATIONS (PDR) AND THE PAINTING AND DECORATION WIRING REGULATIONS (PDWR).
2. ALL PAINTING AND DECORATION WORK SHALL BE COMPLETED WITHIN THE SPECIFIED TIME FRAME.
3. THE CONTRACTOR SHALL MAINTAIN A NEAT AND ORDERLY WORK SITE AT ALL TIMES.
4. ALL MATERIALS SHALL BE STORED PROPERLY AND PROTECTED FROM WEATHER.
5. THE CONTRACTOR SHALL BE RESPONSIBLE FOR THE DISPOSAL OF ALL WASTE MATERIALS.
6. ALL WORK SHALL BE COMPLETED TO THE SATISFACTION OF THE RELEVANT AUTHORITIES.
7. THE CONTRACTOR SHALL BE RESPONSIBLE FOR THE PROTECTION OF ALL ADJACENT PROPERTIES.
8. ALL WORK SHALL BE COMPLETED WITHIN THE SPECIFIED TIME FRAME.
9. THE CONTRACTOR SHALL MAINTAIN A NEAT AND ORDERLY WORK SITE AT ALL TIMES.
10. ALL MATERIALS SHALL BE STORED PROPERLY AND PROTECTED FROM WEATHER.
11. THE CONTRACTOR SHALL BE RESPONSIBLE FOR THE DISPOSAL OF ALL WASTE MATERIALS.
12. ALL WORK SHALL BE COMPLETED TO THE SATISFACTION OF THE RELEVANT AUTHORITIES.

**GENERAL NOTES**

1. ALL WORK SHALL BE IN ACCORDANCE WITH THE LATEST EDITIONS OF THE BUREAU OF FIRE PREVENTION AND SAFETY ENGINEERING (BFPE) CODES AND STANDARDS.
2. THE CONTRACTOR SHALL BE RESPONSIBLE FOR OBTAINING ALL NECESSARY PERMITS AND APPROVALS FROM THE RELEVANT AUTHORITIES.
3. ALL MATERIALS AND WORKMANSHIP SHALL BE SUBJECT TO INSPECTION AND APPROVAL BY THE RELEVANT AUTHORITIES.
4. THE CONTRACTOR SHALL MAINTAIN ACCESS TO ALL SERVICES AND UTILITIES AT ALL TIMES.
5. ALL ELECTRICAL WORK SHALL BE IN ACCORDANCE WITH THE ELECTRICAL REGULATIONS (ER) AND THE ELECTRICAL WIRING REGULATIONS (EWR).
6. ALL MECHANICAL WORK SHALL BE IN ACCORDANCE WITH THE MECHANICAL REGULATIONS (MR) AND THE MECHANICAL WIRING REGULATIONS (MWR).
7. ALL PLUMBING WORK SHALL BE IN ACCORDANCE WITH THE PLUMBING REGULATIONS (PR) AND THE PLUMBING WIRING REGULATIONS (PWR).
8. ALL PAINTING AND DECORATION WORK SHALL BE IN ACCORDANCE WITH THE PAINTING AND DECORATION REGULATIONS (PDR) AND THE PAINTING AND DECORATION WIRING REGULATIONS (PDWR).
9. THE CONTRACTOR SHALL BE RESPONSIBLE FOR THE PROTECTION OF ALL EXISTING SERVICES AND UTILITIES.
10. ALL WORK SHALL BE COMPLETED WITHIN THE SPECIFIED TIME FRAME.
11. THE CONTRACTOR SHALL MAINTAIN A NEAT AND ORDERLY WORK SITE AT ALL TIMES.
12. ALL MATERIALS SHALL BE STORED PROPERLY AND PROTECTED FROM WEATHER.
13. THE CONTRACTOR SHALL BE RESPONSIBLE FOR THE DISPOSAL OF ALL WASTE MATERIALS.
14. ALL WORK SHALL BE COMPLETED TO THE SATISFACTION OF THE RELEVANT AUTHORITIES.
15. THE CONTRACTOR SHALL BE RESPONSIBLE FOR THE PROTECTION OF ALL ADJACENT PROPERTIES.
16. ALL WORK SHALL BE COMPLETED WITHIN THE SPECIFIED TIME FRAME.
17. THE CONTRACTOR SHALL MAINTAIN A NEAT AND ORDERLY WORK SITE AT ALL TIMES.
18. ALL MATERIALS SHALL BE STORED PROPERLY AND PROTECTED FROM WEATHER.
19. THE CONTRACTOR SHALL BE RESPONSIBLE FOR THE DISPOSAL OF ALL WASTE MATERIALS.
20. ALL WORK SHALL BE COMPLETED TO THE SATISFACTION OF THE RELEVANT AUTHORITIES.

FOR INFORMATION PURPOSES ONLY



LEGEND & NOTES A-18

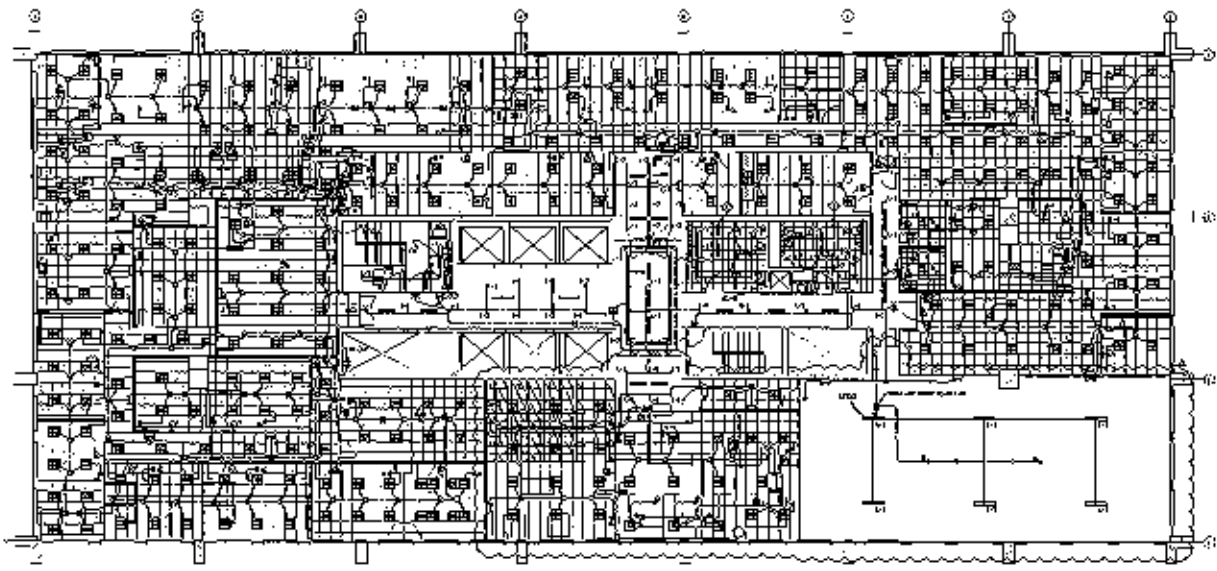
**LEGEND**

ALUMINUM	ALUM
ASBESTOS	ASB
BRICK	BRK
CONCRETE	CON
GLASS	GLS
INSULATION	INS
IRON	IRN
STEEL	STL
WOOD	WOD
...	...

BACO REGIONAL OFFICE 3rd FLOOR  
MAYAGUAY, P.R.  
MAYAGUAY, P.R. 00801  
TEL: (787) 833-1234  
FAX: (787) 833-5678

**LEGEND & NOTES**  
A-18

← SEE E-1 FOR NOTES



**LIGHTING PLAN**  
LEVEL 7

**NOTES:**  
 1. ALL LIGHT FIXTURES SHALL BE INSTALLED IN ACCORDANCE WITH THE ILLUMINANCE REQUIREMENTS OF THE IESNA HANDBOOK, 10TH EDITION, 2008, AND THE IESNA HANDBOOK, 11TH EDITION, 2011, AS APPLICABLE.  
 2. ALL LIGHT FIXTURES SHALL BE INSTALLED IN ACCORDANCE WITH THE IESNA HANDBOOK, 10TH EDITION, 2008, AND THE IESNA HANDBOOK, 11TH EDITION, 2011, AS APPLICABLE.  
 3. ALL LIGHT FIXTURES SHALL BE INSTALLED IN ACCORDANCE WITH THE IESNA HANDBOOK, 10TH EDITION, 2008, AND THE IESNA HANDBOOK, 11TH EDITION, 2011, AS APPLICABLE.

FOR INFORMATION  
PURPOSES ONLY

**LEGEND:**

○	OFFICE
□	CONFERENCE
△	RECEPTION
◇	MEETING
◇	MEETING
◇	MEETING

**DDCO REGIONAL OFFICES 3RD FLOOR**  
 1. ALL LIGHT FIXTURES SHALL BE INSTALLED IN ACCORDANCE WITH THE IESNA HANDBOOK, 10TH EDITION, 2008, AND THE IESNA HANDBOOK, 11TH EDITION, 2011, AS APPLICABLE.  
 2. ALL LIGHT FIXTURES SHALL BE INSTALLED IN ACCORDANCE WITH THE IESNA HANDBOOK, 10TH EDITION, 2008, AND THE IESNA HANDBOOK, 11TH EDITION, 2011, AS APPLICABLE.

**DDCO**  
 DESIGN DEVELOPMENT CONSULTANTS  
 1000 BROADWAY, SUITE 1000  
 NEW YORK, NY 10018  
 TEL: 212 512 1000  
 WWW.DDCO.COM

LIGHTING PLAN (LEVEL 7) A-16

**LIGHTING PLAN**

DATE	2011.08.15
PROJECT	DDCO REGIONAL OFFICES 3RD FLOOR
SCALE	AS SHOWN
DESIGNER	DDCO
CHECKER	DDCO
DATE	2011.08.15

E-1







MECHANICAL SCHEDULE

Table with columns for material, quantity, and description. Includes items like 1/2" x 1/2" x 1/2" galvanized steel, 1/2" x 1/2" x 1/2" galvanized steel, etc.

Table with columns for material, quantity, and description. Includes items like 1/2" x 1/2" x 1/2" galvanized steel, 1/2" x 1/2" x 1/2" galvanized steel, etc.

Table with columns for material, quantity, and description. Includes items like 1/2" x 1/2" x 1/2" galvanized steel, 1/2" x 1/2" x 1/2" galvanized steel, etc.

ELECTRICAL SCHEDULE

Table with columns for material, quantity, and description. Includes items like 1/2" x 1/2" x 1/2" galvanized steel, 1/2" x 1/2" x 1/2" galvanized steel, etc.

Table with columns for material, quantity, and description. Includes items like 1/2" x 1/2" x 1/2" galvanized steel, 1/2" x 1/2" x 1/2" galvanized steel, etc.

Table with columns for material, quantity, and description. Includes items like 1/2" x 1/2" x 1/2" galvanized steel, 1/2" x 1/2" x 1/2" galvanized steel, etc.

Table with columns for material, quantity, and description. Includes items like 1/2" x 1/2" x 1/2" galvanized steel, 1/2" x 1/2" x 1/2" galvanized steel, etc.

LUMINAIRE SCHEDULE

Table with columns for material, quantity, and description. Includes items like 1/2" x 1/2" x 1/2" galvanized steel, 1/2" x 1/2" x 1/2" galvanized steel, etc.

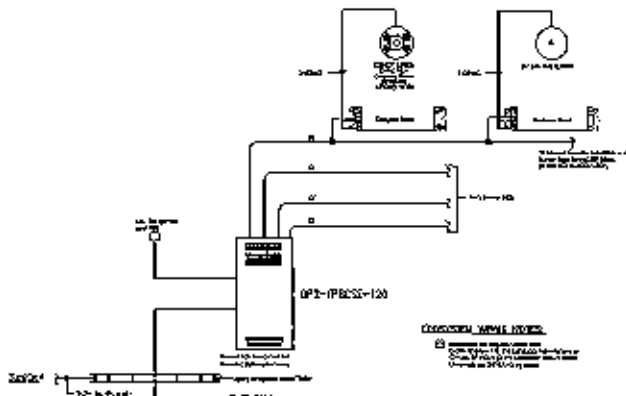
FOR INFORMATION PURPOSES ONLY

DAGO REGIONAL OFFICE 3RD FLOOR... WALKWAY... ELEVATOR... SANITARY... MECHANICAL...

PANEL SCHEDULES... PANEL SCHEDULES A-18... E-4

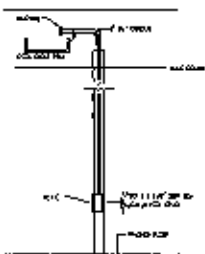


PANEL SCHEDULES A-18



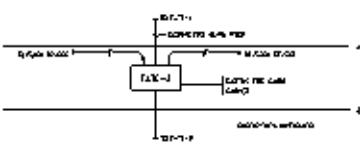
QUANTUM SYSTEM SCHEMATIC DIAGRAM

**NOTE:**  
 1. ALL WIRING SHALL BE IN ACCORDANCE WITH THE NATIONAL ELECTRICAL CODE (NEC) AND THE NATIONAL FIRE ALARM CODE (NFPA 72).



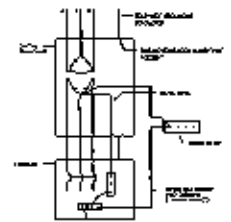
TYPICAL TELEPHONE & COMPUTER OUTLET DETAIL

**TELEPHONE & COMPUTER RINGS:**  
 1. ALL RINGS SHALL BE IN ACCORDANCE WITH THE NATIONAL ELECTRICAL CODE (NEC) AND THE NATIONAL FIRE ALARM CODE (NFPA 72).

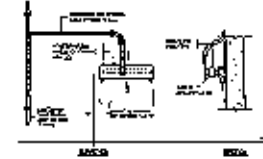


FIRE ALARM RISER DIAGRAM

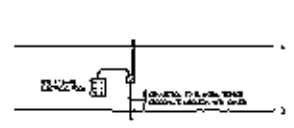
**NOTE:**  
 1. ALL WIRING SHALL BE IN ACCORDANCE WITH THE NATIONAL ELECTRICAL CODE (NEC) AND THE NATIONAL FIRE ALARM CODE (NFPA 72).



DRY TYPE TRANSFORMER TYPICAL CONNECTION DETAIL



TELECOM & POWER ROOMS GROUND BUS BAR



QUANTUM SYSTEM RISER DIAGRAM

**FOR INFORMATION PURPOSES ONLY**

LEGEND:

1	2	3	4
5	6	7	8
9	10	11	12
13	14	15	16
17	18	19	20
21	22	23	24
25	26	27	28
29	30	31	32
33	34	35	36
37	38	39	40
41	42	43	44
45	46	47	48
49	50	51	52
53	54	55	56
57	58	59	60
61	62	63	64
65	66	67	68
69	70	71	72
73	74	75	76
77	78	79	80
81	82	83	84
85	86	87	88
89	90	91	92
93	94	95	96
97	98	99	100

DAGO REGIONAL OFFICES FLOOR  
 1. ALL WIRING SHALL BE IN ACCORDANCE WITH THE NATIONAL ELECTRICAL CODE (NEC) AND THE NATIONAL FIRE ALARM CODE (NFPA 72).



DIAGRAM & DETAILS A-14

